

Messenger RNA from *Schistosoma haematobium*, Egyptian Strain, Eggs

Catalog No. NR-42592

This reagent is the tangible property of the U.S. Government.

Product Description: Messenger RNA (mRNA) was extracted from *Schistosoma haematobium* (*S. haematobium*), Egyptian strain, eggs. Eggs were collected from the livers of hamsters infected with *S. haematobium*, Egyptian strain, cercariae.

Lot^{1,2}: 70004298

Manufacturing Date: 26JAN2017

TEST	SPECIFICATIONS	RESULTS
Concentration	Report results	1 µg in 50 µL per vial (0.02 µg/µL)
OD ₂₆₀ /OD ₂₈₀ Ratio	1.85 to 2.00	2.2 ³
Qualification by RT-PCR Amplification of 28S ribosomal RNA gene ⁴	~ 290 base pair amplicon	~ 290 base pair amplicon (Figure 1)
Contamination from Hamster RNA by RT-PCR ⁵	None detected	None detected

¹QC testing was performed by the Biomedical Research Institute, Rockville, Maryland (NIH-NIAID Contract HHSN272201000005I).

²mRNA was amplified from total RNA by SMART™ mRNA Amplification Kit (Clontech) according to the manufacturer's instructions.

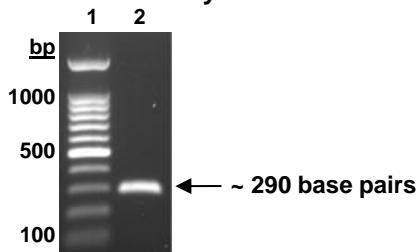
³The Biomedical Research Institute has not had any problems with samples that are slightly out of range of the current OD₂₆₀/OD₂₈₀ specifications.

Please contact@beiresources.org if there are any concerns with this lot and its suitability for your application.

⁴Primers were designed to amplify positions 39 to 326 of *S. mansoni* 28S ribosomal RNA gene (GenBank XM002576922.1).

⁵This test confirms that no contamination occurred during egg collection from hamster genetic materials.

Figure 1: Amplification of 28S Ribosomal RNA Gene by RT-PCR



Lane 1: 100 base pair ladder

Lane 2: 28S ribosomal RNA gene

Date: 12 JUL 2017

Signature:

BEI Resources Authentication

ATCC®, on behalf of BEI Resources, hereby represents and warrants that the material provided under this certificate has been subjected by the contributor to the tests and procedures specified and that the results described, along with any other data provided in this certificate, are true and accurate to the best of ATCC®'s knowledge.

ATCC® is a trademark of the American Type Culture Collection.

You are authorized to use this product for research use only. It is not intended for human use.

