

Schistosoma mansoni, Microsatellite SMDA28 Reverse Primer

Catalog No. NR-29380

This reagent is the tangible property of the U.S. Government.

Product Description: NR-29380 contains a twenty-five nucleotide reverse primer designed to amplify microsatellite SMDA28 from *Schistosoma mansoni* (*S. mansoni*) when paired with the SMDA28 forward primer (NR-29379). The sequence of the SMDA28-R 25-mer is 5'-TGCAACGGTCTCTAAACTGAGACCA-3'.

Lot¹: 70004292

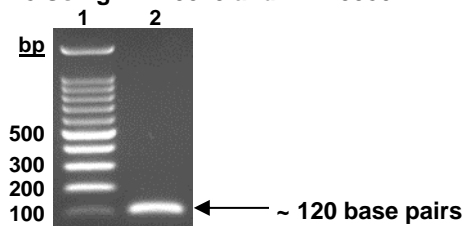
Manufacturing Date: 21MAR2017

TEST	SPECIFICATIONS	RESULTS
PCR Amplification and Sequencing² Amplicon size NCBI blast of sequence	92 to 128 base pairs Identical to GenBank: AF325695	~ 120 base pairs (Figure 1) Identical to GenBank: AF325695
Primer Characteristics¹ Molecular weight Primer melting temperature (T _m) GC content Primer concentration Moles of primer Micrograms of primer	Report results Report results Report results Report results Report results Report results	7635 g/mol 64.6°C 48% 100 µM 3.0 nmoles per vial 22.9 µg per vial

¹NR-29380 lot 70004292 was manufactured by Eurofins MWG Operon. Primer characteristics were determined by the manufacturer.

²PCR completed by the Biomedical Research Institute, Rockville, Maryland. Additional information is available in: Gower, C. M., et al. "Development and Application of an Ethically and Epidemiologically Advantageous Assay for the Multi-Locus Microsatellite Analysis of *Schistosoma mansoni*." *Parasitology* 134 (2007): 523-536. PubMed: 17096873.

Figure 1: PCR Amplification of *S. mansoni* Microsatellite SMDA28 Using NR-29379 and NR-29380



Lane 1: 100 base pair ladder

Lane 2: NR-29379 and NR-29380

Date: 18 JUL 2017

Signature:

BEI Resources Authentication

ATCC®, on behalf of BEI Resources, hereby represents and warrants that the material provided under this certificate has been subjected by the contributor and manufacturer to the tests and procedures specified and that the results described, along with any other data provided in this certificate, are true and accurate to the best of ATCC®'s knowledge.

ATCC® is a trademark of the American Type Culture Collection.

You are authorized to use this product for research use only. It is not intended for human use.

