

***Streptococcus pyogenes*, Strain MGAS9254 (Genotype *emm3*)**
Catalog No. NR-15271

Product Description: *Streptococcus pyogenes* (*S. pyogenes*), strain MGAS9254 was isolated in April 2000 from a case of human peritonitis in Ontario, Canada. *S. pyogenes*, strain MGAS9254 has been molecularly characterized as a genotype *emm3*, Group A *Streptococcus* strain.

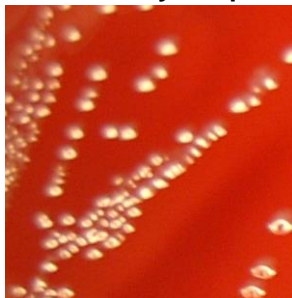
Lot¹: 70003579
Manufacturing Date: 09MAR2017

TEST	SPECIFICATIONS	RESULTS
Phenotypic Analysis Cellular morphology Colony morphology ² Hemolysis on blood agar ² Motility (wet mount) Biochemical tests: Catalase VITEK [®] MS (MALDI-TOF)	Gram-positive cocci Report results β-hemolytic Non-motile Negative Consistent with <i>S. pyogenes</i>	Gram-positive cocci Circular, convex, entire, smooth and white (Figure 1) β-hemolytic Non-motile Negative <i>S. pyogenes</i> (99.9%)
Genotypic Analysis Sequencing of 16S ribosomal RNA gene (830 base pairs)	≥ 99% sequence identity to <i>S. pyogenes</i> type strain (GenBank: AB023575.1)	100% sequence identity to <i>S. pyogenes</i> type strain (GenBank: AB023575.1)
Purity (post-freeze)³	Growth consistent with expected colony morphology	Growth consistent with expected colony morphology
Viability (post-freeze)²	Growth	Growth

¹NR-15271 was produced by inoculation of BEI Resources NRS-15271 (Lot 59586799) into Tryptic Soy broth and grown for 1 day in an aerobic atmosphere. Broth inoculum was added to Tryptic Soy agar with 5% defibrinated sheep blood kolles and incubated for 1 day at 37°C in an aerobic atmosphere with 5% CO₂ to produce this lot.

²1 day at 37°C in an aerobic atmosphere with 5% CO₂ on Tryptic Soy agar with 5% defibrinated sheep blood

³Purity of this lot was assessed for 7 days at 37°C in an aerobic atmosphere with 5% CO₂ on Tryptic Soy agar with 5% defibrinated sheep blood.

Figure 1: Colony Morphology

Date: 19 JUL 2017
Signature:
BEI Resources Authentication

ATCC[®], on behalf of BEI Resources, hereby represents and warrants that the material provided under this certificate has been subjected to the tests and procedures specified and that the results described, along with any other data provided in this certificate, are true and accurate to the best of ATCC[®]'s knowledge.

ATCC[®] is a trademark of the American Type Culture Collection.

You are authorized to use this product for research use only. It is not intended for human use.


BEI Resources
www.beiresources.org

E-mail: contact@beiresources.org

Tel: 800-359-7370

Fax: 703-365-2898