

Monoclonal Anti-*Toxoplasma gondii* Rhoptyr Enriched Subcellular Fraction ROP2-ROP4, Clone T3 4A7 (produced *in vitro*)

Catalog No. NR-50252

Product Description: Antibody Class: IgG1κ

Mouse monoclonal antibody prepared against the rhoptyr enriched subcellular fraction ROP2-ROP4 of *Toxoplasma gondii* (*T. gondii*) clone T3 4A7 was purified from the hybridoma supernatant by protein G affinity chromatography.

Lot¹: 64289060

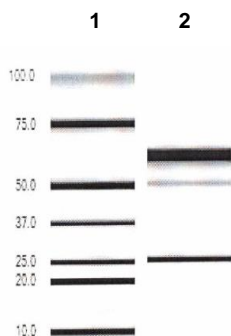
Manufacturing Date: 21DEC2016

TEST	SPECIFICATIONS	RESULTS
Antibody Class Determination	IgG1κ	IgG1κ
Experion Pro260 Analysis Average Purity	Correct molecular weight (MW) for heavy and light chains Report results	Correct molecular weight (MW) for heavy and light chains (Figure 1) 92.5% pure
Concentration by Spectrophotometer at OD₂₈₀	≥ 1.0 mg per mL	1.2 mg per mL
Functional Activity by Immunofluorescence Assay² <i>T. gondii</i> infected human skin fibroblast cells with NR-50252 <i>T. gondii</i> infected human skin fibroblast cells with FITC-conjugated goat anti-mouse IgG	Reactive Nonreactive	Reactive; surface and cell membrane specific staining (Figure 2) Nonreactive; no specific staining of parasites
Sterility	0.22 μm filter-sterilized	0.22 μm filter-sterilized

¹Mouse monoclonal antibody was purified using protein G affinity chromatography from supernatants obtained from mouse hybridoma clone T3 4A7 adapted to serum-free media.

²Specific labeling of *T. gondii* cells with NR-50252 and FITC was observed after infection of human skin fibroblast cells (ATCC[®] CRL-1634[™]) with *T. gondii* (ATCC[®] PRA-310[™]). NR-50252 was used at a dilution of 1:500, followed by FITC-conjugated goat anti-mouse IgG (Invitrogen[®] A16073) as secondary antibody (1:2000).

Figure 1: Experion Pro260 Analysis



Lane 1: Pro260 Ladder
Lane 2: NR-50252

Figure 2: Immunofluorescence Assay of *T. gondii* Infected Fibroblast Cells



Certificate of Analysis for NR-50252

Date: 28 JUL 2017

Signature:



BEI Resources Authentication

ATCC®, on behalf of BEI Resources, hereby represents and warrants that the material provided under this certificate has been subjected to the tests and procedures specified and that the results described, along with any other data provided in this certificate, are true and accurate to the best of ATCC®'s knowledge.

ATCC® is a trademark of the American Type Culture Collection.

You are authorized to use this product for research use only. It is not intended for human use.

