

Escherichia coli, Strain H10407

Catalog No. NR-4

(Derived from ATCC® 35401™)

Product Description: The enterotoxigenic *Escherichia coli* (ETEC) is a gram-negative, rod-shaped bacterium that produces both heat-labile and heat-stable enterotoxins in the gastrointestinal tract, resulting in diarrhea.

Lot¹: 3561329

Manufacturing Date: 31MAR2004

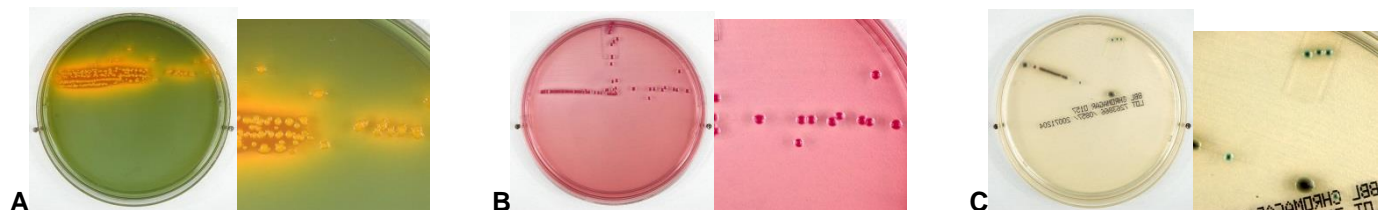
TEST	SPECIFICATIONS	RESULTS
Phenotypic Analysis Cellular morphology Colony morphology Tryptic soy agar Hektoen enteric agar Sorbitol-MacConkey agar CHROMagar™ O157 Analytical profile index (API® 20 E)	Gram-negative rods Circular, low convex, undulate, translucent Bright yellow-orange Report results Report results Consistent with <i>Escherichia coli</i>	Gram-negative rods Circular, low convex, undulate, translucent Bright yellow-orange (see Figure 1A) Red (see Figure 1B) Blue (see Figure 1C) Consistent with <i>Escherichia coli</i>
Genotypic Analysis of Extracted Nucleic Acid Sequencing of 16S rRNA gene (~ 580 bp) PCR amplification of plasmid markers <i>elt</i> (pJY11) <i>esth</i> and/or <i>estp</i> (pCS1) EAF (pEAF) <i>bfpA</i> (pEAF) <i>invE</i> (pINV) CVD432 (pAA) <i>aggR</i> (pAA) PCR amplification of chromosomal markers <i>astA</i> <i>eaeA</i> <i>stx1</i> <i>sx2</i>	Consistent with <i>Escherichia coli</i> Report results Report results Negative Negative Negative Negative Negative Report results Negative Negative Negative	Consistent with <i>Escherichia coli</i> Positive Positive Negative Negative Negative Negative Negative Positive Negative Negative Negative
Viability (post-freeze)³	Growth	Growth

¹NR-4 was produced by inoculation of ATCC® 35401™ into Trypticase Soy broth (BD 211768).

²Also consistent with *Shigella* species.

³16 hours at 37°C in an aerobic atmosphere in LB broth (ATCC® 60-2100).

Figure 1



Certificate of Analysis for NR-4

Date: 18 MAR 2015

Signature:



Title:

Technical Manager, BEI Authentication or designee

ATCC[®], on behalf of BEI Resources, hereby represents and warrants that the material provided under this certificate has been subjected to the tests and procedures specified and that the results described, along with any other data provided in this certificate, are true and accurate to the best of ATCC[®]'s knowledge.

ATCC[®] is a trademark of the American Type Culture Collection.
You are authorized to use this product for research use only. It is not intended for human use.

