

Escherichia coli, Strain E2348/69

Catalog No. NR-50518

Product Description: *Escherichia coli* (*E. coli*), strain E2348/69, serotype O127:H6, was isolated in 1969 during an outbreak of diarrhea in an infant nursery in Taunton, England. *E. coli*, strain E2348/69 is known to contain the pMAR2 plasmid carrying the enteropathogenic *E. coli* (EPEC) adherence factor (EAF).

Lot¹: 2226

Manufacturing Date: 08DEC2016

TEST	SPECIFICATIONS	RESULTS
Phenotypic Analysis Cellular morphology Colony morphology ² Motility ³ VITEK [®] MS (MALDI-TOF)	Gram-negative rods Report results Motile Consistent with <i>E. coli</i>	Gram-negative rods Circular, convex, entire, smooth and cream (Figure 1) Motile <i>E. coli</i> (99.9%)
Antibiotic Susceptibility Profile by Kirby-Bauer Disc Diffusion⁴ Chloramphenicol (30 µg) Kanamycin (30 µg) Nalidixic Acid (30 µg) Tetracycline (30 µg)	Susceptible (≥ 18 mm) Susceptible (≥ 18 mm) Resistant (≤ 13 mm) Susceptible (≥ 15 mm)	Susceptible (26 mm) Susceptible (28 mm) Resistant (6 mm) Susceptible (25 mm)
Genotypic Analysis Sequencing of 16S ribosomal RNA gene (~ 840 base pairs) Riboprinter [®] Microbial Characterization System	≥ 99% sequence identity to <i>E. coli</i> , strain E2348/69 (GenBank: NC_011601.1) <i>E. coli</i> (≥ 0.85)	99.5% sequence identity to <i>E. coli</i> , strain E2348/69 (GenBank: NC_011601.1) <i>E. coli</i> (0.94)
PCR Amplification of Genetic Targets from Extracted DNA Translocated intimin receptor (<i>tir</i>) Wild type <i>tir</i> Δ <i>tir</i> S-ribosylhomocysteinase (<i>luxS</i>) Wild type <i>luxS</i> Δ <i>luxS</i> Transcriptional regulator (<i>gadX</i>) Wild type <i>gadX</i> Δ <i>gadX</i> Type III secretion system ATPase (<i>escN</i>) Wild type <i>escN</i> Δ <i>escN</i> Flagellin (<i>fliC</i>) Wild type <i>fliC</i> Δ <i>fliC</i> Plasmid pMAR2 (<i>bfpD</i>)	~ 1620 base pair amplicon ~ 2260 base pair amplicon ~ 1310 base pair amplicon ~ 2590 base pair amplicon ~ 1300 base pair amplicon ~ 2200 base pair amplicon ~ 710 base pair amplicon ~ 1560 base pair amplicon ~ 1560 base pair amplicon ~ 2200 base pair amplicon ~ 840 base pair amplicon	~ 1620 base pair amplicon ~ 1310 base pair amplicon ~ 1300 base pair amplicon ~ 710 base pair amplicon ~ 1560 base pair amplicon ~ 840 base pair amplicon
Purity (post-freeze)⁵	Growth consistent with expected colony morphology	Growth consistent with expected colony morphology
Viability (post-freeze)²	Growth	Growth

¹NR-50518 was produced by inoculation of the deposited material into Tryptic Soy broth and grown for 1 day at 37°C in an aerobic atmosphere. Broth inoculum was added to Tryptic Soy agar kolles, which were grown for 1 day at 37°C in an aerobic atmosphere to produce this lot.

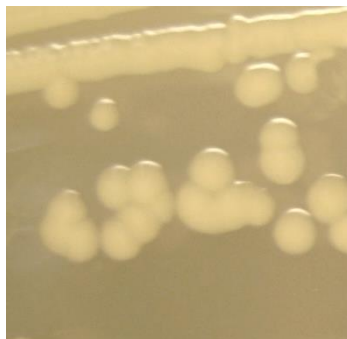
²1 day at 37°C in an aerobic atmosphere on Tryptic Soy agar

³Motility test performed in Remel[™] Motility Test Medium w/TTC indicator for 1 day at 37°C in an ambient atmosphere.

⁴Minimum Inhibitory Concentration (MIC); MIC Interpretation Guideline: CLSI M100-S26 (2016)

⁵Purity of this lot was assessed for 7 days at 37°C in an aerobic atmosphere on Tryptic Soy agar with 5% defibrinated sheep blood.

Figure 1: Colony Morphology



Date: 03 AUG 2017

Signature: 

BEI Resources Authentication

ATCC®, on behalf of BEI Resources, hereby represents and warrants that the material provided under this certificate has been subjected to the tests and procedures specified and that the results described, along with any other data provided in this certificate, are true and accurate to the best of ATCC®'s knowledge.

ATCC® is a trademark of the American Type Culture Collection.

You are authorized to use this product for research use only. It is not intended for human use.

