

***Proteus mirabilis*, Strain WGLW4**

**Catalog No. HM-752**

**Product Description:** *Proteus mirabilis* (*P. mirabilis*), strain WGLW4 was isolated from human urine in Boston, Massachusetts, USA.

**Lot<sup>1,2</sup>: 70008330**

**Manufacturing Date: 23AUG2017**

TEST	SPECIFICATIONS	RESULTS
<b>Phenotypic Analysis</b> Cellular morphology Colony morphology <sup>3</sup>  Motility (wet mount)	Gram-negative rods Report results  Motile	Gram-negative rods Circular, convex, entire, translucent and cream (Figure 1) Motile
<b>Genotypic Analysis</b> Sequencing of 16S ribosomal RNA gene (~ 780 base pairs)	≥ 99% identical to <i>P. mirabilis</i> , strain WGLW4 (GenBank: AMGU01000003.1)	100% identical to <i>P. mirabilis</i> , strain WGLW4 (GenBank: AMGU01000003.1)
<b>Purity (post-freeze)<sup>4</sup></b>	Consistent with expected colony morphology	Consistent with expected colony morphology
<b>Viability (post-freeze)<sup>3</sup></b>	Growth	Growth

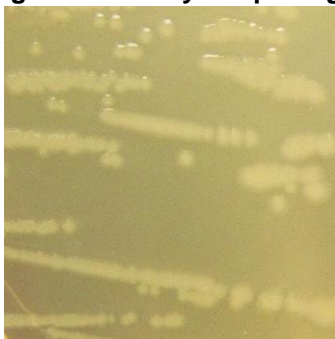
<sup>1</sup>Quality control of HMP material is only performed to demonstrate that the material distributed by BEI Resources is identical to the deposited material. It should not be considered a complete characterization of the deposited organism.

<sup>2</sup>*P. mirabilis*, strain WGLW4 was deposited by Wendy S. Garrett, M.D., Ph.D., Assistant Professor, and Leslie H. Wardwell, Department of Immunology and Infectious Diseases, Harvard School of Public Health, Boston, Massachusetts, USA. Lot 70008330 of HM-752 was produced by inoculation of BEI Resources HMS-752 lot 62363088 into Nutrient broth and incubated for 1 day at 37°C in an aerobic atmosphere. The material from the initial growth was added to Nutrient agar kolles, which were incubated for 1 day at 37°C in an aerobic atmosphere to produce this lot.

<sup>3</sup>1 day at 37°C in an aerobic atmosphere on Nutrient agar

<sup>4</sup>Purity of this lot was assessed for 7 days at 37°C in an aerobic atmosphere with 5% CO<sub>2</sub> on Nutrient agar.

**Figure 1: Colony Morphology**



**Date:** 29 SEP 2017

**Signature:**

BEI Resources Authentication

ATCC®, on behalf of BEI Resources, hereby represents and warrants that the material provided under this certificate has been subjected to the tests and procedures specified and that the results described, along with any other data provided in this certificate, are true and accurate to the best of ATCC®'s knowledge.

ATCC® is a trademark of the American Type Culture Collection.

You are authorized to use this product for research use only. It is not intended for human use.



**BEI Resources**  
[www.beiresources.org](http://www.beiresources.org)

E-mail: [contact@beiresources.org](mailto:contact@beiresources.org)

Tel: 800-359-7370

Fax: 703-365-2898