

**Escherichia coli, Strain JPN15**

**Catalog No. NR-50517**

**Product Description:** *Escherichia coli* (*E. coli*), strain JPN15 is a pMAR7 plasmid-cured derivative of *E. coli*, strain E2348/69, which was ingested by and isolated from a volunteer. Strain E2348/69 was originally isolated in 1969 during an outbreak of diarrhea in an infant nursery in Taunton, England.

**Lot<sup>1</sup>: 2224**

**Manufacturing Date: 23NOV2016**

TEST	SPECIFICATIONS	RESULTS
<b>Phenotypic Analysis</b> Cellular morphology Colony morphology <sup>2</sup>  Motility <sup>3</sup> VITEK® MS (MALDI-TOF)	Gram-negative rods Report results  Motile <i>E. coli</i>	Gram-negative rods Circular, low convex, entire, smooth and cream (Figure 1) Motile <i>E. coli</i> (99.9%)
<b>Antibiotic Susceptibility Profile<sup>4</sup></b> HardyDisk™ AST Disks <sup>5</sup> Chloramphenicol (30 µg) Kanamycin (30 µg) Nalidixic Acid (30 µg) Tetracycline (30 µg)	Susceptible (≥ 18 mm) Susceptible (≥ 18 mm) Resistant (≤ 13 mm) Susceptible (≥ 15 mm)	Susceptible (18 mm) Susceptible (19 mm) Resistant (6 mm) Susceptible (18 mm)
<b>Genotypic Analysis</b> Sequencing of 16S ribosomal RNA gene (~ 1350 base pairs)  Riboprinter® Microbial Characterization System	≥ 99% sequence identity to <i>E. coli</i> strain E2348/69 (GenBank: NC_011601.1) <i>E. coli</i> (≥ 0.85)	99.8% sequence identity to <i>E. coli</i> strain E2348/69 (GenBank: NC_011601.1) <i>E. coli</i> (0.91)
<b>PCR Amplification of Genetic Targets from Extracted DNA</b> Translocated intimin receptor ( <i>tir</i> ) Wild type <i>tir</i> Δ <i>tir</i> S-ribosylhomocysteinase ( <i>luxS</i> ) Wild type <i>luxS</i> Δ <i>luxS</i> Transcriptional regulator ( <i>gadX</i> ) Wild type <i>gadX</i> Δ <i>gadX</i> Type III secretion system ATPase ( <i>escN</i> ) Wild type <i>escN</i> Δ <i>escN</i> Flagellin ( <i>fliC</i> ) Wild type <i>fliC</i> Δ <i>fliC</i> Plasmid pMAR2 ( <i>bfpD</i> )	~ 1620 base pair amplicon ~ 2260 base pair amplicon  ~ 1310 base pair amplicon ~ 2590 base pair amplicon  ~ 1300 base pair amplicon ~ 2200 base pair amplicon  ~ 710 base pair amplicon ~ 1560 base pair amplicon  ~ 1560 base pair amplicon ~ 2200 base pair amplicon No amplicon	~ 1620 base pair amplicon  ~ 1310 base pair amplicon  ~ 1300 base pair amplicon  ~ 710 base pair amplicon  ~ 1560 base pair amplicon  No amplicon
<b>Purity (post-freeze)<sup>6</sup></b>	Growth consistent with expected colony morphology	Growth consistent with expected colony morphology
<b>Viability (post-freeze)<sup>2</sup></b>	Growth	Growth

<sup>1</sup>NR-50517 was produced by inoculation of the deposited material into Tryptic Soy broth and grown for 1 day at 37°C in an aerobic atmosphere. Broth inoculum was added to Tryptic Soy agar kolles, which were grown for 1 day at 37°C in an aerobic atmosphere to produce this lot.

<sup>2</sup>1 day at 37°C in an aerobic atmosphere on Tryptic Soy agar

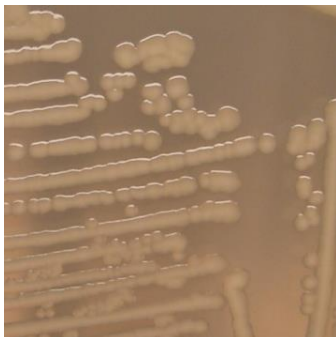
<sup>3</sup>Motility test performed in Remel™ Motility Test Medium with TTC Indicator for 1 day at 37°C in an aerobic atmosphere.

<sup>4</sup>Minimum Inhibitory Concentration (MIC); MIC Interpretation Guideline: CLSI M100-S26 (2016)

<sup>5</sup>1 day at 37°C in an aerobic atmosphere on Mueller Hinton agar

<sup>6</sup>Purity of this lot was assessed for 7 days at 37°C in an aerobic atmosphere with 5% CO<sub>2</sub> on Tryptic Soy agar with 5% defibrinated sheep blood.

Figure 1: Colony Morphology



Date: 28 AUG 2017

Signature:

A handwritten signature in black ink, which appears to read "David C. Archer". The signature is written in a cursive style.

BEI Resources Authentication

ATCC®, on behalf of BEI Resources, hereby represents and warrants that the material provided under this certificate has been subjected to the tests and procedures specified and that the results described, along with any other data provided in this certificate, are true and accurate to the best of ATCC®'s knowledge.

ATCC® is a trademark of the American Type Culture Collection.

You are authorized to use this product for research use only. It is not intended for human use.

