

***Sneathia amnii*, Strain Sn35**

Catalog No. NR-50515

Product Description: *Sneathia amnii* (*S. amnii*), strain Sn35 was isolated in 2011 from a vaginal swab collected from a woman presenting with symptoms of preterm labor at 26 weeks of gestation in Richmond, Virginia, USA.

Lot¹: 70004541

Manufacturing Date: 09MAY2017

TEST	SPECIFICATIONS	RESULTS
Phenotypic Analysis Cellular morphology Colony morphology ² Motility (wet mount) Biochemical Characterization Catalase Cystine trypticase agar with 1% glucose Cystine trypticase agar with 1% maltose Cystine trypticase agar base control	Gram-negative rods Report results Report results Negative Positive Positive Negative	Gram-negative rods Punctiform (Figure 1) Non-motile Negative Positive Positive Negative
Genotypic Analysis Sequencing of 16S ribosomal RNA gene (~ 1360 base pairs)	≥ 99% sequence identity to <i>S. amnii</i> , strain Sn35 (Genbank: CP011280.1)	99.9% sequence identity to <i>S. amnii</i> , strain Sn35 (Genbank: CP011280.1)
Purity (post-freeze) Anaerobic growth ³ Aerobic growth ⁴	Growth consistent with expected colony morphology No growth	Growth consistent with expected colony morphology No growth
Viability (post-freeze)²	Growth	Growth

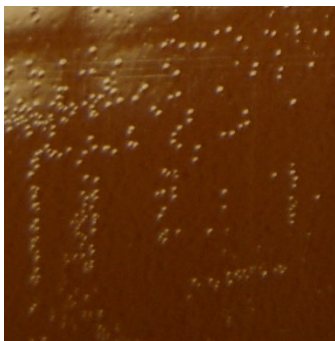
¹NR-50515 was produced by inoculation of the deposited material into Modified Brain Heart Infusion broth with 5% human serum and grown for 1 day at 37°C in an anaerobic atmosphere (< 5% O₂; Remel™ Pack-Anaero™). After 5 passages, growth material was added to Chocolate agar kolles, which were grown for 1 day at 37°C in an anaerobic atmosphere to produce this lot.

²2 day at 37°C in an anaerobic atmosphere on Chocolate agar

³Purity of this lot was assessed for 7 days at 37°C in an anaerobic atmosphere on Chocolate agar.

⁴Purity of this lot was assessed for 7 days at 37°C in an aerobic atmosphere with 5% CO₂ on Tryptic Soy agar with 5% defibrinated sheep blood.

Figure 1: Colony Morphology



Date: 02 AUG 2017

Signature:



BEI Resources Authentication

ATCC[®], on behalf of BEI Resources, hereby represents and warrants that the material provided under this certificate has been subjected to the tests and procedures specified and that the results described, along with any other data provided in this certificate, are true and accurate to the best of ATCC[®]'s knowledge.

ATCC[®] is a trademark of the American Type Culture Collection.

You are authorized to use this product for research use only. It is not intended for human use.

