

Prevotella bivia, Strain GED7760C

Catalog No. HM-1286

Product Description: *Prevotella bivia* (*P. bivia*), strain GED7760C is a vaginal isolate obtained in 2014 from a pregnant woman with bacterial vaginosis in St. Louis, Missouri, USA.

Lot^{1,2}: 70006653

Manufacturing Date: 07JUL2017

TEST	SPECIFICATIONS	RESULTS
Phenotypic Analysis Cellular morphology Colony morphologies ^{3,4} Motility (wet mount) VITEK [®] MS (MALDI-TOF)	Gram-negative rods Report results Report results <i>P. bivia</i>	Gram-negative rods Colony type 1: Circular, convex, entire, smooth and gray (Figure 1) Colony type 2: Circular, convex, entire, smooth and cream (Figure 1) Non-motile <i>P. bivia</i> (99.9%)
Genotypic Analysis Sequencing of 16S ribosomal RNA gene (~ 790 base pairs)	≥ 99% sequence identity to <i>P. bivia</i> , strain GED7760C (GenBank: LRQF02000029.1)	99.9% sequence identity to <i>P. bivia</i> , strain GED7760C (GenBank: LRQF02000029.1)
Purity (post-freeze) Anaerobic growth ⁵ Aerobic growth ⁶	Growth consistent with expected colony morphology No growth	Growth consistent with expected colony morphology No growth
Viability (post-freeze)²	Growth	Growth

¹Quality control of HMP material is only performed to demonstrate that the material distributed by BEI Resources is identical to the deposited material. It should not be considered a complete characterization of the deposited organism.

²*P. bivia*, strain GED7760C was deposited by Amanda Lewis, Ph.D., Assistant Professor, Department of Molecular Microbiology, Washington University School of Medicine, St. Louis, Missouri, USA. HM-1286 was produced by inoculation of the deposited material into Modified Reinforced Clostridial broth and incubated for 2 days at 37°C in an anaerobic atmosphere (< 5% O₂; Remel™ Pack-Anaero™). The material from the initial growth was passaged once in Modified Reinforced Clostridial broth for 2 days at 37°C in an anaerobic atmosphere to produce this lot.

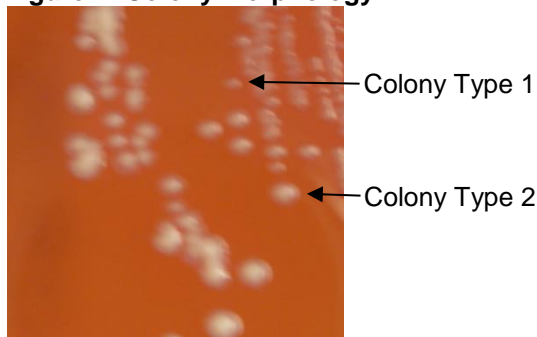
³2 days at 37°C in an anaerobic atmosphere on Brucella agar with hemin (5 µg/mL) and vitamin K1 (10 µg/mL) supplemented with 5% defibrinated sheep blood

⁴Two colony types were observed. Plating of the individual colony types showed that colony type 2 reverted to the colony type 1 after 2 days of incubation at 37°C in an anaerobic atmosphere. VITEK[®] MS (MALDI-TOF) analysis identified cells from both colony types as *P. bivia*.

⁵Purity of this lot was assessed for 7 days at 37°C in an anaerobic atmosphere on Tryptic Soy agar with 5% defibrinated sheep blood.

⁶Purity of this lot was assessed for 7 days at 37°C in an aerobic atmosphere with 5% CO₂ on Tryptic Soy agar with 5% defibrinated sheep blood.

Figure 1: Colony Morphology



Certificate of Analysis for HM-1286

Date: 07 NOV 2017

Signature: 

BEI Resources Authentication

ATCC®, on behalf of BEI Resources, hereby represents and warrants that the material provided under this certificate has been subjected to the tests and procedures specified and that the results described, along with any other data provided in this certificate, are true and accurate to the best of ATCC®'s knowledge.

ATCC® is a trademark of the American Type Culture Collection.

You are authorized to use this product for research use only. It is not intended for human use.

