

**Monoclonal Anti-*Leishmania mexicana*, Strain M379 (MNYC/BZ/62/M379), Clone M-7 (produced *in vitro*)**

**Catalog No. NR-50148**

**Product Description:** Antibody Class: IgG1κ

Mouse monoclonal antibody prepared against *Leishmania mexicana* (*L. mexicana*), strain M379 (MNYC/BZ/62/M379), clone M-7 was purified from the hybridoma supernatant by protein G affinity chromatography.

**Lot<sup>1</sup>: 70004314**

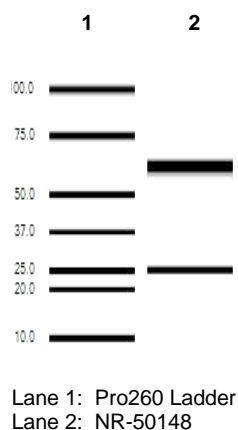
**Manufacturing Date: 25APR2017**

TEST	SPECIFICATIONS	RESULTS
<b>Antibody Class Determination</b>	Report results	IgG1κ
<b>Experion Pro260 Analysis</b> Average Purity	Correct molecular weight (MW) for heavy and light chains Report results	Correct MW for heavy and light chains (Figure 1) 97.8% pure
<b>Concentration by Spectrophotometer at OD<sub>280</sub></b>	≥ 1.0 mg per mL	1.2 mg per mL
<b>Functional Activity by Immunofluorescence Assay<sup>2</sup></b> <i>L. mexicana</i> promastigotes with NR-50148	Reactive	Reactive; staining of <i>Leishmania</i> promastigotes (Figure 2)
<i>L. mexicana</i> promastigotes with FITC-conjugated goat anti-mouse IgG	Nonreactive	Nonreactive; no specific staining of <i>Leishmania</i> promastigotes
<b>Sterility</b>	0.22 μm filter-sterilized	0.22 μm filter-sterilized

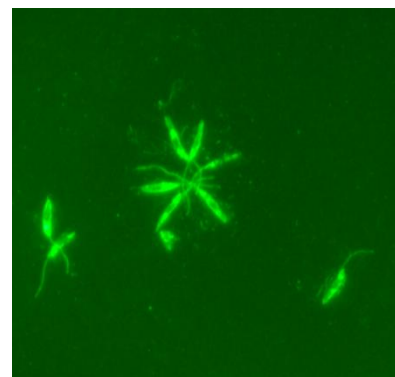
<sup>1</sup>Mouse monoclonal antibody was purified using protein G affinity chromatography from supernatants obtained from mouse hybridoma clone M-7 adapted to serum-free media.

<sup>2</sup>Specific labeling of *L. mexicana* promastigotes with NR-50148 and FITC was observed after culturing of *L. mexicana*, strain MNYC/BZ/62/M379 (ATCC<sup>®</sup> 50156<sup>™</sup> lot 60624530) for 24 hours. NR-50148 was used at a dilution of 1:500, followed by FITC-conjugated goat anti-mouse IgG (Invitrogen<sup>®</sup> A16073) as secondary antibody (1:2000).

**Figure 1: Experion Pro260 Analysis**



**Figure 2: Immunofluorescence Assay of *Leishmania* Promastigotes**



## Certificate of Analysis for NR-50148

**Date:** 10 NOV 2017

**Signature:** 

### BEI Resources Authentication

ATCC®, on behalf of BEI Resources, hereby represents and warrants that the material provided under this certificate has been subjected to the tests and procedures specified and that the results described, along with any other data provided in this certificate, are true and accurate to the best of ATCC®'s knowledge.

ATCC® is a trademark of the American Type Culture Collection.

You are authorized to use this product for research use only. It is not intended for human use.

