

Monoclonal Anti-*Leishmania braziliensis*, Strain M2903 (MHOM/BR/75/M2903), Clone B-16 (produced *in vitro*)

Catalog No. NR-50149

Product Description: Antibody Class: IgG1κ

Mouse monoclonal antibody prepared against *Leishmania braziliensis*, strain M2903 (MHOM/BR/75/M2903), clone B-16 was purified from the hybridoma supernatant by protein G affinity chromatography.

Lot¹: 70004315

Manufacturing Date: 31MAY2017

| TEST | SPECIFICATIONS | RESULTS |
|--|--|--|
| Antibody Class Determination | Report results | IgG1κ |
| Experion Pro260 Analysis Average Purity | Correct molecular weight (MW) for heavy and light chains Report results | Correct MW for heavy and light chains (Figure 1) 98.8% pure |
| Concentration by Spectrophotometer at OD₂₈₀ | ≥ 1.0 mg per mL | 1.2 mg per mL |
| Functional Activity by Immunofluorescence Assay² <i>L. braziliensis</i> promastigotes with NR-50149 | Reactive | Reactive; staining of <i>Leishmania</i> promastigotes (Figure 2) |
| <i>L. braziliensis</i> promastigotes with FITC-conjugated goat anti-mouse IgG | Nonreactive | Nonreactive; no specific staining of <i>Leishmania</i> promastigotes |
| Sterility | 0.22 μm filter-sterilized | 0.22 μm filter-sterilized |

¹Mouse monoclonal antibody was purified using protein G affinity chromatography from supernatants obtained from mouse hybridoma clone B-16 adapted to serum-free media.

²Specific labeling of *L. braziliensis* promastigotes with NR-50149 and FITC was observed after culturing of *L. braziliensis*, strain MHOM/BR/75/M2903 (ATCC[®] 50135™ lot 63069519) for 24 hours. NR-50149 was used at a dilution of 1:250, followed by FITC-conjugated goat anti-mouse IgG (Invitrogen[®] A16073) as secondary antibody (1:2000).

Figure 1: Experion Pro260 Analysis

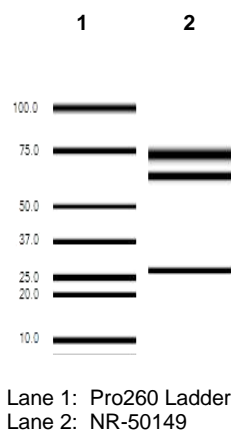
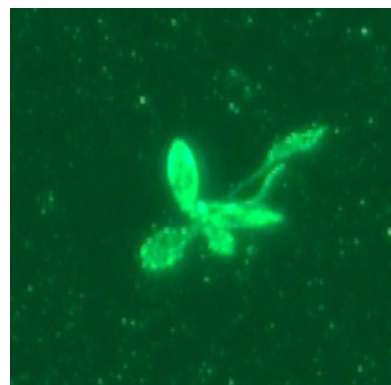


Figure 2: Immunofluorescence Assay of *Leishmania* Promastigotes



Certificate of Analysis for NR-50149

Date: 10 NOV 2017

Signature: 

BEI Resources Authentication

ATCC[®], on behalf of BEI Resources, hereby represents and warrants that the material provided under this certificate has been subjected to the tests and procedures specified and that the results described, along with any other data provided in this certificate, are true and accurate to the best of ATCC[®]'s knowledge.

ATCC[®] is a trademark of the American Type Culture Collection.

You are authorized to use this product for research use only. It is not intended for human use.

