

Monoclonal Anti-*Leishmania guyanensis*, Strain M4147 (MHOM/BR/75/M4147), Clone B-19 (produced *in vitro*)

Catalog No. NR-50150

Product Description: Antibody Class: IgG2ak

Mouse monoclonal antibody prepared against *Leishmania guyanensis* (*L. guyanensis*), strain M4147 (MHOM/BR/75/M4147), clone B-19 was purified from the hybridoma supernatant by protein G affinity chromatography.

Lot¹: 70004316

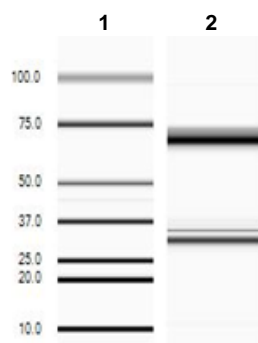
Manufacturing Date: 28JUN2017

TEST	SPECIFICATIONS	RESULTS
Antibody Class Determination	Report results	IgG2ak
Experion Pro260 Analysis Average Purity	Correct molecular weight (MW) for heavy and light chains Report results	Correct molecular weight (MW) for heavy and light chains (Figure 1) 95.0% pure
Concentration by Spectrophotometer at OD₂₈₀	≥ 1.0 mg per mL	1.4 mg per mL
Functional Activity by Immunofluorescence Assay² <i>L. guyanensis</i> promastigotes with NR-50150 <i>L. guyanensis</i> promastigotes with FITC-conjugated goat anti-mouse IgG	Reactive Nonreactive	Reactive; staining of <i>Leishmania</i> promastigotes (Figure 2) Nonreactive; no specific staining of <i>Leishmania</i> promastigotes
Sterility	0.22 µm filter-sterilized	0.22 µm filter-sterilized

¹Mouse monoclonal antibody was purified using protein G affinity chromatography from supernatants obtained from mouse hybridoma clone B-19 adapted to serum-free media.

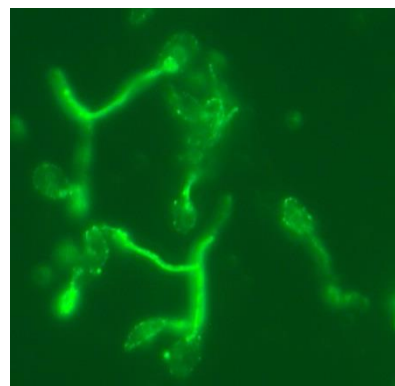
²Specific labeling of *L. guyanensis* promastigotes with NR-50150 and FITC was observed after culturing of *L. guyanensis*, strain MHOM/BR/75/M4147 (ATCC® PR-50126™ lot SF 1871) for 24 hours. NR-50150 was used at a dilution of 1:500, followed by FITC-conjugated goat anti-mouse IgG (Invitrogen® A16073) as secondary antibody (1:2000).

Figure 1: Experion Pro260 Analysis



Lane 1: Pro260 Ladder
Lane 2: NR-50150

Figure 2: Immunofluorescence Assay of *Leishmania* Promastigotes



Certificate of Analysis for NR-50150

Date: 15 NOV 2017

Signature: 

BEI Resources Authentication

ATCC[®], on behalf of BEI Resources, hereby represents and warrants that the material provided under this certificate has been subjected to the tests and procedures specified and that the results described, along with any other data provided in this certificate, are true and accurate to the best of ATCC[®]'s knowledge.

ATCC[®] is a trademark of the American Type Culture Collection.

You are authorized to use this product for research use only. It is not intended for human use.

