

Monoclonal Anti-*Leishmania panamensis*/*Leishmania braziliensis*, Strain WR120 (MHOM/PA/74/WR120), Clone B-5 (produced *in vitro*)

Catalog No. NR-50147

Product Description: Antibody Class: IgG1κ

Mouse monoclonal antibody prepared against *Leishmania panamensis* (*L. panamensis*)/*Leishmania braziliensis* (*L. braziliensis*), strain WR120 (MHOM/PA/74/WR120), clone B-5 was purified from the hybridoma supernatant by protein G affinity chromatography.

Lot¹: 70004313

Manufacturing Date: 16MAY2017

TEST	SPECIFICATIONS	RESULTS
Antibody Class Determination	Report results	IgG1κ
Experion Pro260 Analysis Average Purity	Correct molecular weight (MW) for heavy and light chains Report results	Correct MW for heavy and light chains (Figure 1) 95.7% pure
Concentration by Spectrophotometer at OD₂₈₀	≥ 1.0 mg per mL	1.5 mg per mL
Functional Activity by Immunofluorescence Assay² <i>L. panamensis</i> promastigotes with NR-50147 <i>L. panamensis</i> promastigotes with FITC-conjugated goat anti-mouse IgG	Reactive Nonreactive	Reactive; staining of <i>Leishmania</i> promastigotes (Figure 2) Nonreactive; no specific staining of <i>Leishmania</i> promastigotes
Sterility	0.22 μm filter-sterilized	0.22 μm filter-sterilized

¹Mouse monoclonal antibody was purified using protein G affinity chromatography from supernatants obtained from mouse hybridoma clone B-5 adapted to serum-free media.

²Specific labeling of *L. panamensis* promastigotes with NR-50147 and FITC was observed after culturing of *L. panamensis* PSC-1 (BEI Resources NR-50162 lot 64233619) for 24 hours. NR-50147 was used at a dilution of 1:500, followed by FITC-conjugated goat anti-mouse IgG (Invitrogen® A16073) as secondary antibody (1:2000).

Figure 1: Experion Pro260 Analysis

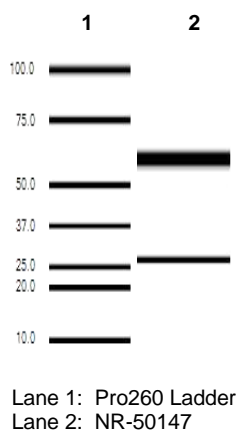
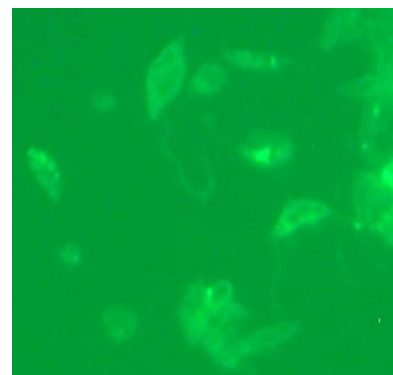


Figure 2: Immunofluorescence Assay of *Leishmania* Promastigotes



Date: 02 NOV 2017

Signature: 

BEI Resources Authentication

ATCC®, on behalf of BEI Resources, hereby represents and warrants that the material provided under this certificate has been subjected to the tests and procedures specified and that the results described, along with any other data provided in this certificate, are true and accurate to the best of ATCC®'s knowledge.

ATCC® is a trademark of the American Type Culture Collection.

You are authorized to use this product for research use only. It is not intended for human use.

