

Genomic RNA from Mayaro Virus, TRVL 4675

Catalog No. NR-50083

Product Description: Genomic RNA was isolated from a preparation of cell lysate and supernatant from *Cercopithecus aethiops* kidney epithelial cells¹ infected with Mayaro virus (MAYV), TRVL 4675.

Lot²: 70007020

Manufacturing Date: 03AUG2017

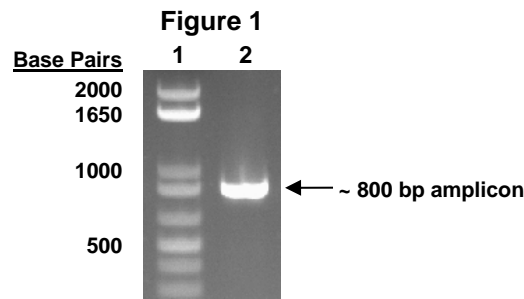
TEST	SPECIFICATIONS	RESULTS
Sequencing of Species-Specific Region (766 nucleotides)	Consistent with MAYV, TRVL 4675 Consistent with NR-49913	100% identity with MAYV, TRVL 4675 (GenBank: DQ487369) Consistent with NR-49913
Functional Activity by RT-PCR Amplification³	~ 800 bp amplicon	~ 800 bp amplicon (Figure 1)
Total RNA Content by RiboGreen[®] Measurement (Viral, Cellular, and Carrier)	Report results	2.2 ng per 100 µL
Viral RNA Content by Droplet Digital RT-PCR	Report results	3.0 × 10 ⁴ copies per µL
Virus Inactivation 10% of total yield inoculated on Vero cells ¹ and evaluated for cytopathic effect ⁴	No viable virus detected	No viable virus detected

¹Vero cells: ATCC[®] CCL-81™

²Nucleic acid was extracted from a preparation of MAYV, TRVL 4675 (BEI Resources NR-49913 lot 63856758) using a QIAamp[®] Viral RNA Mini Kit (Qiagen 52906).

³Reverse transcription was performed using an iScript™ cDNA Synthesis Kit (Bio-Rad 170-8891) with 10 µL of NR-50083 in a 20 µL reaction; PCR was performed using iTaq™ DNA Polymerase (Bio-Rad 170-8870) with 5 µL of cDNA in a 50 µL reaction.

⁴Use of the QIAamp[®] Viral RNA Mini Kit has been demonstrated to consistently inactivate MAYV viruses as shown by the absence of cytopathic effect after plating the entire extract on virus-susceptible cells.



Lane 1: Invitrogen™ TrackIt™ 1 Kb Plus DNA Ladder
Lane 2: NR-50083

Date: 15 JAN 2018

Signature: *Michael R. Gynther*

BEI Resources Authentication

ATCC[®], on behalf of BEI Resources, hereby represents and warrants that the material provided under this certificate has been subjected to the tests and procedures specified and that the results described, along with any other data provided in this certificate, are true and accurate to the best of ATCC[®]'s knowledge.

ATCC[®] is a trademark of the American Type Culture Collection.
You are authorized to use this product for research use only. It is not intended for human use.

