

**Genomic DNA from *Plasmodium falciparum*, Strain Dd2**

**Catalog No. MRA-156G**

This reagent is the tangible property of the U.S. Government.

**Product Description:** Genomic DNA was extracted from a preparation of *Plasmodium falciparum* (*P. falciparum*), strain Dd2.

**Lot<sup>1,2</sup>: 61219204**

**Manufacturing Date: 24OCT2012**

TEST	SPECIFICATIONS	RESULTS
<b>Sequencing of Merozoite Surface Protein 2 (MSP2) gene (~ 810 base pairs)</b>	≥ 99% sequence identity to <i>P. falciparum</i> , strain Dd2 (GenBank: AASM01000018.1)	99.4% sequence identity to <i>P. falciparum</i> , strain Dd2 (GenBank: AASM01000018.1)
<b>Agarose Gel Electrophoresis</b>	High molecular weight chromosomal DNA	High molecular weight chromosomal DNA (Figure 1)
<b>Concentration by NanoDrop Measurement</b>	Report results	~ 500 ng in 50 µL per vial (10 ng/µL)
<b>Amount per Vial</b>	Report results	~ 500 ng
<b>Functional Activity by PCR Amplification MSP2 locus<sup>3</sup></b>	~ 600 to 900 base pair amplicon	~ 900 base pair amplicon
<b>OD<sub>260</sub>/OD<sub>280</sub> Ratio</b>	1.6 to 2.1	2.1

<sup>1</sup>MRA-156G was produced from a cell culture of BEI Resources MR-MRA-156 lot 59523802. Genomic DNA was extracted using proprietary technology. Note: MRA-156G lot 61219204 has not been tested for protozoan inactivation; however, an extraction procedure was used that has been shown to consistently inactivate 100% of malaria parasites.

<sup>2</sup>MRA-156G lot 61219204 was vialled in TE buffer (10 mM Tris-HCl and 0.5 mM EDTA, pH 9).

<sup>3</sup>Primer sequences and conditions for PCR are available upon request.

**Date:** 24 JAN 2018

**Signature:**



BEI Resources Authentication

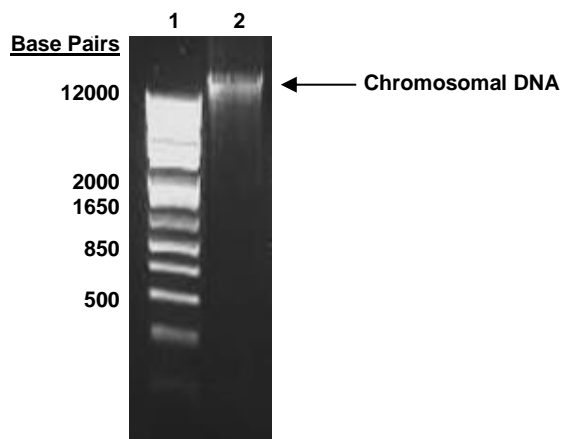
ATCC®, on behalf of BEI Resources, hereby represents and warrants that the material provided under this certificate has been subjected to the tests and procedures specified and that the results described, along with any other data provided in this certificate, are true and accurate to the best of ATCC®'s knowledge.

ATCC® is a trademark of the American Type Culture Collection.

You are authorized to use this product for research use only. It is not intended for human use.



Figure 1: Agarose Gel Electrophoresis



Lane 1: Invitrogen™ 1 Kb Plus DNA Ladder  
Lane 2: ~ 800 ng of MRA-156G