

Genomic RNA from West Nile Virus, BA 80900-4 (44)

Catalog No. NR-50433

Product Description: Genomic RNA was isolated from a preparation of cell lysate and supernatant from *Cercopithecus aethiops* kidney epithelial cells¹ infected with West Nile virus (WNV), BA 80900-4 (44).

Lot²: 70003926

Manufacturing Date: 14APR2017

TEST	SPECIFICATIONS	RESULTS
Sequencing of Species-Specific Region (840 nucleotides)	Consistent with WNV Consistent with NR-49915	Consistent with WNV ³ Consistent with NR-49915
Functional Activity by RT-PCR Amplification⁴	~ 950 bp amplicon	~ 950 bp amplicon (Figure 1)
Total RNA Content by RiboGreen[®] Measurement (Viral, Cellular and Carrier)	Report results	2.3 ng per 100 µL
Virus Inactivation 10% of total yield inoculated on Vero cells ¹ and evaluated for cytopathic effect and by RT-PCR after serial passage ⁵	No viable virus detected	No viable virus detected

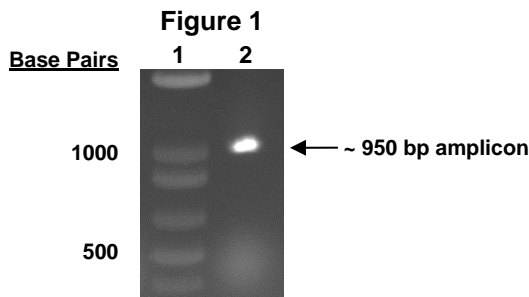
¹Vero cells: ATCC[®] CCL-81™

²Nucleic acid was extracted from a preparation of WNV, BA 80900-4 (44) (BEI Resources NR-49915 lot 63902492), using a QIAamp[®] Viral RNA Mini Kit (Qiagen 52906).

³Sequence information for WNV, BA 80900-4 (44) is not available in the NCBI database; nucleotide sequence obtained for NR-50433 lot 70003926 is highly similar to numerous WNV strains.

⁴Amplified using iTaq[™] Universal SYBR Green One-step Kit (Bio-Rad 172-5151) with 5 µL of NR-50433 in a 50 µL reaction

⁵Use of the QIAamp[®] Viral RNA Mini Kit has been demonstrated to consistently inactivate 100% of WNV as shown by the absence of cytopathic effect (CPE) and viral RNA expression by RT-PCR after plating the entire extract on virus-susceptible cells for two passages.



Lane 1: Invitrogen™ TrackIt™ 1 Kb Plus DNA Ladder
Lane 2: NR-50433

Date: 22 JAN 2018

Signature: *Michael R. Gynther*

BEI Resources Authentication

ATCC[®], on behalf of BEI Resources, hereby represents and warrants that the material provided under this certificate has been subjected to the tests and procedures specified and that the results described, along with any other data provided in this certificate, are true and accurate to the best of ATCC[®]'s knowledge.

ATCC[®] is a trademark of the American Type Culture Collection.

You are authorized to use this product for research use only. It is not intended for human use.

