

***Borrelia burgdorferi*, Signature-Tagged Mutagenesis Library Clone T06TC141 (Gene BB\_0431)**

**Catalog No. NR-23712**

**Product Description:** *Borrelia burgdorferi* (*B. burgdorferi*), strain B31 5A18NP1 STM library clone T06TC141 was produced by signature-tagged mutagenesis (STM) of the BB\_0431 gene.

**Lot<sup>1</sup>: 70010277**

**Manufacturing Date: 22NOV2017**

TEST	SPECIFICATIONS	RESULTS
<b>Phenotypic Analysis</b> Cellular morphology <sup>2</sup> Motility (wet mount)	Spirochete Report results	Spirochete Motile
<b>Purity (post-freeze)<sup>3</sup></b>	No growth observed	No growth observed
<b>Viability (post-freeze)</b> Visual observation LIVE/DEAD <sup>®</sup> BacLight <sup>™</sup> Bacterial Viability	Growth Green fluorescence visible	Growth <sup>2</sup> Green fluorescence visible (Figure 1) <sup>4</sup>

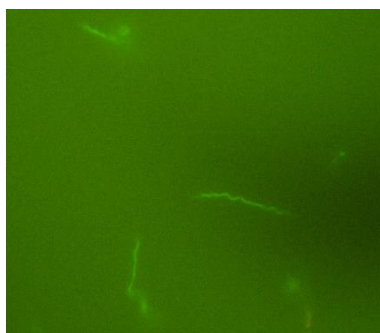
<sup>1</sup>NR-23712 was produced by inoculation of the deposited material into Revised Barbour-Stoenner-Kelly medium supplemented with 200 µg/mL kanamycin and 40 µg/mL gentamicin and grown for 15 days at 32°C in a microaerophilic atmosphere to produce this lot.

<sup>2</sup>14 days at 32°C in a microaerophilic atmosphere in Revised Barbour-Stoenner-Kelly medium supplemented with 200 µg/mL kanamycin and 40 µg/mL gentamicin

<sup>3</sup>Purity of this lot was assessed for 14 days at 37°C in an aerobic atmosphere with 5% CO<sub>2</sub> on Tryptic Soy agar with 5% defibrinated sheep blood.

<sup>4</sup>Determined with LIVE/DEAD<sup>®</sup> BacLight<sup>™</sup> Bacterial Viability Kit, 100x magnification (Invitrogen<sup>™</sup> L34856) after a 14-day incubation at 32°C in a microaerophilic atmosphere in Revised Barbour-Stoenner-Kelly medium supplemented with 200 µg/mL kanamycin and 40 µg/mL gentamicin. Cells with a compromised membrane that are dead or dying will stain red, while cells with an intact membrane will stain green.

**Figure 1: LIVE/DEAD<sup>®</sup> BacLight<sup>™</sup> Bacterial Viability**



12 FEB 2018

Program Manager or designee, ATCC Federal Solutions

ATCC<sup>®</sup>, on behalf of BEI Resources, hereby represents and warrants that the material provided under this certificate has been subjected to the tests and procedures specified and that the results described, along with any other data provided in this certificate, are true and accurate to the best of ATCC<sup>®</sup>'s knowledge.

ATCC<sup>®</sup> is a trademark of the American Type Culture Collection.

You are authorized to use this product for research use only. It is not intended for human use.

