

Genomic DNA from *Mycobacterium caprae*, Strain NLA000700039

Catalog No. NR-49663

Product Description: Genomic DNA was extracted from a preparation of *Mycobacterium caprae* (*M. caprae*), strain NLA000700039. *M. caprae*, strain NLA000700039 was isolated in 2006 from human pus in the Netherlands.

Lot^{1,2}: 63954395

Manufacturing Date: 07APR2016

TEST	SPECIFICATIONS	RESULTS
Genotypic Analysis Sequencing of 16S ribosomal RNA gene (~ 750 base pairs)	≥ 99% sequence identity to <i>M. caprae</i> type strain (GenBank: AJ131120.1)	100% sequence identity to <i>M. caprae</i> type strain (GenBank: AJ131120.1) ³
Agarose Gel Electrophoresis	High molecular weight chromosomal DNA	High molecular weight chromosomal DNA (Figure 1)
Concentration by PicoGreen® Measurement	0.7 to 1.5 µg in 25 to 100 µL	0.5 µg in 52 µL per vial (9 µg/mL)
Amount per vial	0.7 to 1.5 µg	0.5 µg ⁴
Functional Activity by PCR Amplification 16S ribosomal RNA gene	~ 1500 base pair amplicon	~ 1500 base pair amplicon
OD₂₆₀/OD₂₈₀ Ratio	1.7 to 2.1	2.0
Bacterial Inactivation 10% of total yield plated on agar ^{5,6}	No viable bacteria detected	No viable bacteria detected

¹The bacterial preparation used for extraction of genomic DNA was produced from the deposited material. Genomic DNA was extracted using proprietary technology.

²NR-49663 lot 63954395 was viald in TE buffer (10 mM Tris-HCl, 1 mM EDTA, pH ~ 8.0).

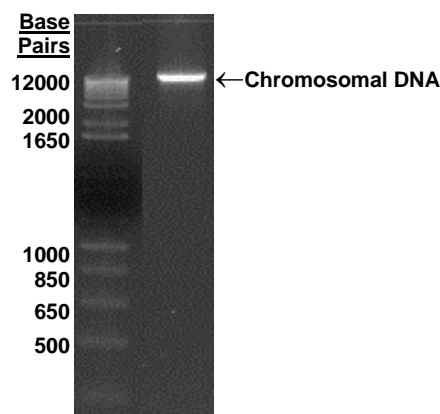
³Also consistent with other *Mycobacterium* species

⁴The amount of genomic DNA per vial falls below the current specification, but does not negatively impact the final product.

⁵30 days at 37°C in an aerobic atmosphere with 5% CO₂ on Middlebrook 7H10 agar with OADC enrichment

⁶An extraction procedure was used that has been shown to consistently inactivate 100% of Gram-positive and Gram-negative bacteria.

Figure 1: Agarose Gel Electrophoresis



Lane 1: Invitrogen™ TrackIt 1 Kb Plus DNA Ladder™
Lane 2: ~180 ng of NR-49663

23 FEB 2018

Program Manager or designee, ATCC Federal Solutions

ATCC®, on behalf of BEI Resources, hereby represents and warrants that the material provided under this certificate has been subjected to the tests and procedures specified and that the results described, along with any other data provided in this certificate, are true and accurate to the best of ATCC®'s knowledge.

ATCC® is a trademark of the American Type Culture Collection.

You are authorized to use this product for research use only. It is not intended for human use.

