

Enterococcus faecium, Strain ERV99

Catalog No. HM-975

Product Description: *Enterococcus faecium* (*E. faecium*), strain ERV99 was isolated in 2005 from human peritoneal fluid collected in Colombia.

Lot^{1,2}: 70010742

Manufacturing Date: 29NOV2017

TEST	SPECIFICATIONS	RESULTS
Phenotypic Analysis Cellular morphology Colony morphology ³ Motility (wet mount)	Gram-positive cocci Report results Report results	Gram-positive cocci Circular, convex, entire, smooth and gray (Figure 1) Non-motile
Genotypic Analysis Sequencing of 16S ribosomal RNA gene (~ 690 base pairs)	≥ 99% identity to <i>E. faecium</i> , strain ERV99 (GenBank: AMAQ01000090.1)	100% sequence identity to <i>E. faecium</i> , strain ERV99 (GenBank: AMAQ01000090.1) ⁴
Purity (post-freeze)⁵	Consistent with expected colony morphology	Consistent with expected colony morphology
Viability (post-freeze)³	Growth	Growth

¹Quality control of HMP material is only performed to demonstrate that the material distributed by BEI Resources is identical to the deposited material. It should not be considered a complete characterization of the deposited organism.

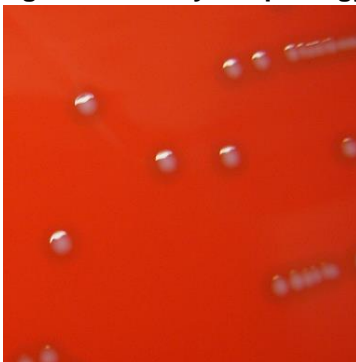
²*E. faecium*, strain ERV99 was deposited by Cesar A. Arias, Assistant Professor of Medicine, Department of Internal Medicine, The University of Texas Health Science Center at Houston, Houston, Texas, USA. HM-975 lot 70010742 was produced by inoculation of a subculture of the deposited material in Brain Heart Infusion broth, which was incubated for 1 day at 37°C in an aerobic atmosphere with 5% CO₂. Broth inoculum was added to Tryptic Soy agar with 5% defibrinated sheep blood kolles and grown 1 day at 37°C in an aerobic atmosphere with 5% CO₂ to produce this lot.

³1 day at 37°C in an aerobic atmosphere with 5% CO₂ on Tryptic Soy agar with 5% defibrinated sheep blood

⁴Also consistent with other *Enterococcus* species

⁵Purity of this lot was assessed for 7 days at 37°C in an aerobic atmosphere with 5% CO₂ on Tryptic Soy agar with 5% defibrinated sheep blood.

Figure 1: Colony Morphology



Date: 31 JAN 2018

Signature:

BEI Resources Authentication

ATCC®, on behalf of BEI Resources, hereby represents and warrants that the material provided under this certificate has been subjected to the tests and procedures specified and that the results described, along with any other data provided in this certificate, are true and accurate to the best of ATCC®'s knowledge.

ATCC® is a trademark of the American Type Culture Collection.

You are authorized to use this product for research use only. It is not intended for human use.

