

Monoclonal Anti-*Mycobacterium tuberculosis* LprG/P27 (Gene Rv1411c), Clone A (produced *in vitro*)

Catalog No. NR-13806

This reagent is the tangible property of the U.S. Government.

Product Description:

Antibody Class: IgG₁

Antibody Designation: α -Rv1411c

Monoclonal antibody to *Mycobacterium tuberculosis*, strain H37Rv lipoprotein G (LprG) was produced in cell culture using a B cell hybridoma generated by the fusion of myeloma cells with immunized mouse splenocytes.

Lot: 70008601

Manufacturing Date: 17NOV2017

Production and QC testing were performed by Colorado State University (CSU). The CSU documentation for lot 17.anti-Rv1411c.A.10.16.25.mm is attached.

Note: Lot 17.anti-Rv1411c.A.10.16.25.mm was tested against the Triton™ X-114 (TX-114) extraction (CSU SOP PP010) and contains periplasmic phosphate-binding lipoprotein (PhoS1/PstS1; 38 kDa protein; Rv0934c), lipoprotein antigen precursor (LpqH; 19 kDa protein; Rv3763c), and lipoarabinomannan carrier protein (LprG; 25 kDa protein; Rv3763c) as the predominant antigens.

ATCC®, on behalf of BEI Resources, hereby represents and warrants that the material provided under this certificate has been subjected by the contractor to the tests and procedures specified and that the results described, along with any other data provided in this certificate, are true and accurate to the best of ATCC®'s knowledge.

ATCC® is a trademark of the American Type Culture Collection.

You are authorized to use this product for research use only. It is not intended for human use.



Work Sheet for Antibodies

General Information:

BEI Catalog Number: NR-13806
Product Description: Monoclonal Anti-LprG (Rv1411c), Clone A
CSU Lot Number: 17.anti-Rv1411c.A.10.16.25.mm
Species: *Mycobacterium tuberculosis*
Strain: H37Rv
Type (select one): Mouse Monoclonal
 Rabbit Polyclonal
 Guinea Pig Polyclonal

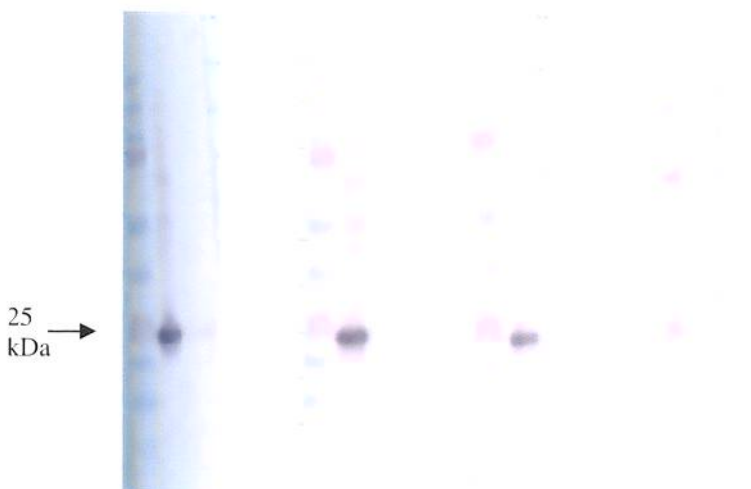
Production Information:

Cell Line: 6C10-D2, Lot# 17.anti-Rv1411c.A.10.16.25.Hyb SOP#: AB103.4, AB104.3
Notebook/pp: Monoclonal Antibody #2 BEI, pg. 8
Amount of CS Harvested: 55 mL Clarity: clear
IgG Purification: N/A SOP#: N/A Notebook/pp: N/A
Ig isotype: IgG₁ SOP#: AB106.1 Notebook/pp: Monoclonal Antibody #2 BEI, pg. 24

QC Information:

Tested Against: Tx114, 2 ug (WB), 5 ug (ELISA) SOP#: AB102.1
TX114 is a fraction enriched with lipoproteins such as Psts1 (38kDa, Rv0934c), LprG (25kDa, Rv1411c), and LpqH (19kDa, Rv3763c). (Wolfe et al, 2010. JPR)
Notebook/pp: Monoclonal Antibody #2 BEI, pg. 11 (WB), pg. 14 (ELISA)
Tested by: Western blot: Titer: 1:150
 ELISA: Titer: 1:100
Special Instructions: N/A
QC Western blot:

1:50	1:100	1:150	1:200
------	-------	-------	-------



*Aliquot Information: 40 x 1 mL aliquots (BEI), 15 x 1 mL aliquots
*Vial information indicates vials made at the time of QC. Bulk vials may be broken down as needed.

Kala Early 2/22/18 C. Behappy 2/22/18
(Research Associate) (date) (Laboratory Supervisor) (date)