

Genomic DNA from *Plasmodium falciparum*, Strain V1/S

Catalog No. MRA-820G

This reagent is the tangible property of the U.S. Government.

Product Description: Genomic DNA was extracted from a preparation of *Plasmodium falciparum* (*P. falciparum*), strain V1/S.

Lot^{1,2}: 70002447

Manufacturing Date: 21APR2017

TEST	SPECIFICATIONS	RESULTS
Sequencing of Merozoite Surface Protein 2 (MSP2) gene (~ 800 base pairs)	Consistent with <i>P. falciparum</i>	Consistent with <i>P. falciparum</i>
Agarose Gel Electrophoresis	High molecular weight chromosomal DNA	High molecular weight chromosomal DNA (Figure 1)
Concentration by PicoGreen® Measurement	Report results	10.7 ng/μL (535 ng in 50 μL per vial)
Amount per Vial	Report results	535 ng
Functional Activity by PCR Amplification MSP2 locus³	~ 600 to 900 base pair amplicon	~ 900 base pair amplicon
OD₂₆₀/OD₂₈₀ Ratio	1.6 to 2.1	2.0
Mycoplasma Contamination DNA Detection by PCR	None detected	None detected

¹MRA-820G was produced from a cell culture of BEI Resources MRA-820 lot 7398274. Genomic DNA was extracted using proprietary technology.

Note: MRA-820G lot 70002447 has not been tested for protozoan inactivation; however, an extraction procedure was used that has been shown to consistently inactivate 100% of malaria parasites.

²MRA-820G lot 70002447 was vialled in TE buffer (10 mM Tris-HCl and 0.5 mM EDTA, pH 9).

³Primer sequences and conditions for PCR are available upon request.

Date: 24 JAN 2018

Signature:



BEI Resources Authentication

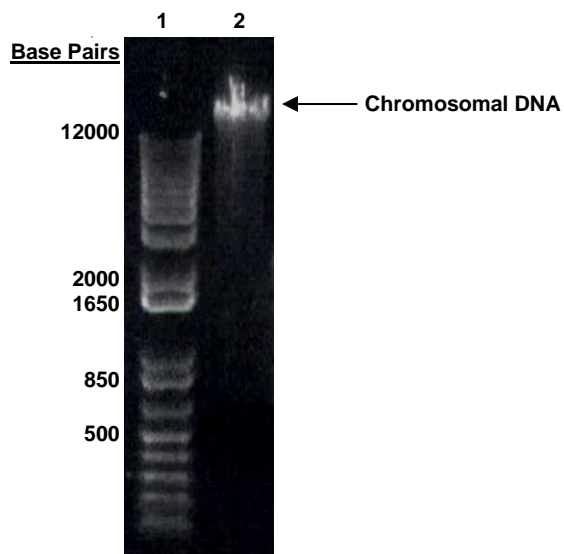
ATCC®, on behalf of BEI Resources, hereby represents and warrants that the material provided under this certificate has been subjected to the tests and procedures specified and that the results described, along with any other data provided in this certificate, are true and accurate to the best of ATCC®'s knowledge.

ATCC® is a trademark of the American Type Culture Collection.

You are authorized to use this product for research use only. It is not intended for human use.



Figure 1: Agarose Gel Electrophoresis



Lane 1: Invitrogen™ 1 Kb Plus DNA Ladder
Lane 2: ~ 200 ng of MRA-820G