

Genomic DNA from *Listeria monocytogenes*, Strain 10403S

Catalog No. NR-13340

Product Description: Genomic DNA was extracted from a preparation of *Listeria monocytogenes* (*L. monocytogenes*), strain 10403S.

Lot^{1,2}: 70011118

Manufacturing Date: 07DEC2017

TEST	SPECIFICATIONS	RESULTS
Genotypic Analysis Sequencing of 16S ribosomal RNA gene (~ 720 base pairs)	≥ 99% sequence identity to <i>L. monocytogenes</i> , strain 10403S (GenBank: CP002002.1)	99.9% sequence identity to <i>L. monocytogenes</i> , strain 10403S (GenBank: CP002002.1) ³
Agarose Gel Electrophoresis	High molecular weight chromosomal DNA	High molecular weight chromosomal DNA (Figure 1)
Concentration by PicoGreen® Measurement	0.7 to 1.5 µg in 25 to 100 µL per vial	0.9 µg in 50 µL per vial (18 µg/mL)
Amount per vial	0.7 to 1.5 µg	0.9 µg
Functional Activity by PCR Amplification 16S ribosomal RNA gene	~ 1500 base pair amplicon	~ 1500 base pair amplicon
OD₂₆₀/OD₂₈₀ Ratio	1.7 to 2.1	1.8
Bacterial Inactivation 10% of total yield plated on agar ^{4,5}	No viable bacteria detected	No viable bacteria detected

¹The bacterial preparation used for extraction of genomic DNA was produced by culture of BEI Resources NR-13223 lot 58666839. Genomic DNA was extracted using proprietary technology.

²NR-13340 lot 70011118 was vialled in 10 mM Tris-HCl, pH 8 - 8.5.

³Also consistent with other *Listeria* species

⁴25 days at 37°C in an aerobic atmosphere on Tryptic Soy agar with 5% defibrinated sheep blood

⁵An extraction procedure was used that has been shown to consistently inactivate 100% of Gram-positive and Gram-negative bacteria.

14 MAR 2018

Program Manager or designee, ATCC Federal Solutions

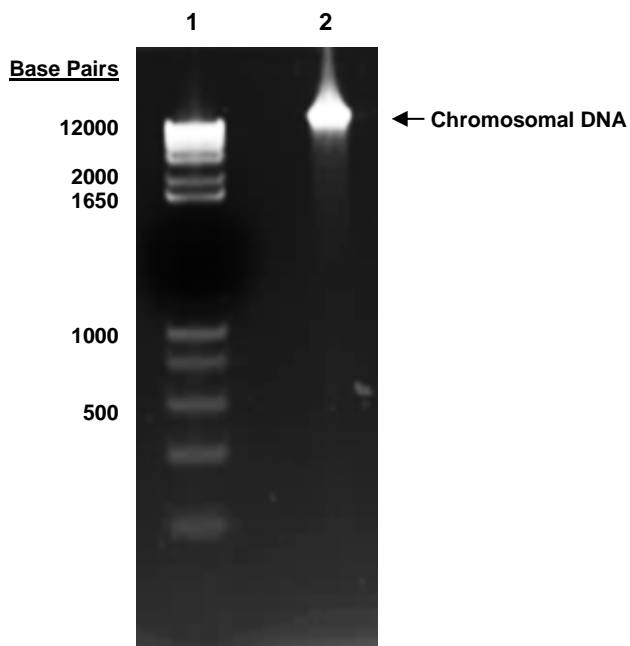
ATCC®, on behalf of BEI Resources, hereby represents and warrants that the material provided under this certificate has been subjected to the tests and procedures specified and that the results described, along with any other data provided in this certificate, are true and accurate to the best of ATCC®'s knowledge.

ATCC® is a trademark of the American Type Culture Collection.

You are authorized to use this product for research use only. It is not intended for human use.



Figure 1: Agarose Gel Electrophoresis



Lane 1: Invitrogen™ TrackIt 1 Kb Plus DNA Ladder™
Lane 2: 200 ng of NR-13340