

of the preserved material into Tryptic Soy broth and grown 1 day at 37°C in an aerobic atmosphere. Broth inoculum was added to Tryptic Soy agar with 5% defibrinated sheep blood kolles which were grown 1 day at 37°C in an aerobic atmosphere to produce this lot.

²1 day at 37°C in an aerobic atmosphere on Tryptic Soy agar

³1 day at 37°C in an aerobic atmosphere on Tryptic Soy agar with 5% defibrinated sheep blood.

⁴Minimum Inhibitory Concentration (MIC); MIC Interpretation Guideline: CLSI M100-S22 (2012)

⁵The production of beta-lactamase was detected using a Cefinase™ Paper Disc (BBL™ 231650).

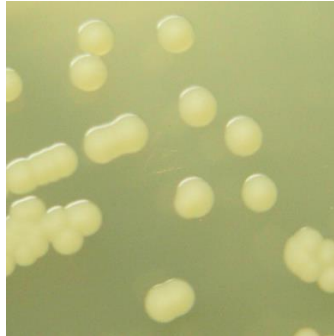
⁶MIC Interpretation Guideline: EUCAST Version 4.0 (2014)

⁷1 day at 37°C in an aerobic atmosphere on Mueller Hinton agar

⁸Also consistent with other *Staphylococcus* species

⁹Purity of this lot was assessed for 8 days at 37°C in an aerobic atmosphere with 5% CO₂ on Tryptic Soy agar.

Figure 1: Colony Morphology



15 MAR 2018

Program Manager or designee, ATCC Federal Solutions

ATCC®, on behalf of BEI Resources, hereby represents and warrants that the material provided under this certificate has been subjected to the tests and procedures specified and that the results described, along with any other data provided in this certificate, are true and accurate to the best of ATCC®'s knowledge.

ATCC® is a trademark of the American Type Culture Collection.

You are authorized to use this product for research use only. It is not intended for human use.

