

***Neisseria meningitidis*, Strain NM3001**

Catalog No. NR-30542

Product Description: *Neisseria meningitidis* (*N. meningitidis*), strain NM3001 was isolated in 2006 from human blood in the United States. *N. meningitidis*, strain NM3001 was deposited as a member of serogroup NG.

Lot¹: 70010081

Manufacturing Date: 15NOV2017

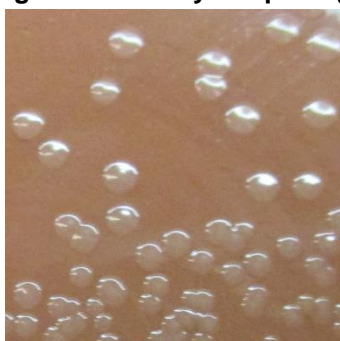
TEST	SPECIFICATIONS	RESULTS
Phenotypic Analysis Cellular morphology Colony morphology ² Motility (wet mount) VITEK [®] MS (MALDI-TOF)	Gram-negative cocci Report results Report results <i>N. meningitidis</i>	Gram-negative cocci Circular, low convex, entire and smooth (Figure 1) Non-motile <i>N. meningitidis</i> (99.9%)
Genotypic Analysis Sequencing of 16S ribosomal RNA gene (~ 730 base pairs)	≥ 99% sequence identity to <i>N. meningitidis</i> , strain NM3001 (GenBank: ALYA01000005.1)	100% sequence identity to <i>N. meningitidis</i> , strain NM3001 (GenBank: ALYA01000005.1)
Purity (post-freeze)³	Consistent with expected colony morphology	Consistent with expected colony morphology
Viability (post-freeze)²	Growth	Growth

¹NR-30542 lot 70010081 was produced by inoculation of BEI Resources NRS-30542 lot 61508619 into *Haemophilus* Test medium. Broth inoculum was added to Chocolate agar and grown for 1 day at 37°C in an aerobic atmosphere with 5% CO₂. A loopful of colonies from the Chocolate agar growth was suspended in *Haemophilus* Test medium broth and used to inoculate Chocolate agar kolles, which were grown for 1 day at 37°C in an aerobic atmosphere with 5% CO₂ to produce this lot.

²1 day at 37°C in an aerobic atmosphere with 5% CO₂ on Chocolate agar

³Purity of this lot was assessed for 7 days on Tryptic Soy agar with 5% defibrinated sheep blood at 37°C in an aerobic atmosphere with 5% CO₂.

Figure 1: Colony Morphology



29 MAR 2018

Program Manager or designee, ATCC Federal Solutions

ATCC[®], on behalf of BEI Resources, hereby represents and warrants that the material provided under this certificate has been subjected to the tests and procedures specified and that the results described, along with any other data provided in this certificate, are true and accurate to the best of ATCC[®]'s knowledge.

ATCC[®] is a trademark of the American Type Culture Collection.

You are authorized to use this product for research use only. It is not intended for human use.



BEI Resources
www.beiresources.org

E-mail: contact@beiresources.org

Tel: 800-359-7370
 Fax: 703-365-2898