

Staphylococcus capitis, Strain SK14

Catalog No. HM-117

Product Description: *Staphylococcus capitis* (*S. capitis*), strain SK14 was isolated from normal skin of the right arm of a 58-year-old man.

Lot^{1,2}: 70010884

Manufacturing Date: 30NOV2017

TEST	SPECIFICATIONS	RESULTS
Phenotypic Analysis Cellular morphology Colony morphology ³ Motility	Gram-positive cocci Report results Report results	Gram-positive cocci Circular, low convex, entire, smooth and cream (Figure 1) Non-motile
Genotypic Analysis Sequencing of 16S ribosomal RNA gene (~ 770 base pairs)	≥ 99% sequence identity to <i>S. capitis</i> , strain SK14 (GenBank: ACFR01000029.1)	100% sequence identity to <i>S. capitis</i> , strain SK14 (GenBank: ACFR01000029.1) ⁴
Purity (post-freeze)⁵	Consistent with expected colony morphology	Consistent with expected colony morphology
Viability (post-freeze)³	Growth	Growth

¹Quality control of HMP material is only performed to demonstrate that the material distributed by BEI Resources is identical to the deposited material. It should not be considered a complete characterization of the deposited organism.

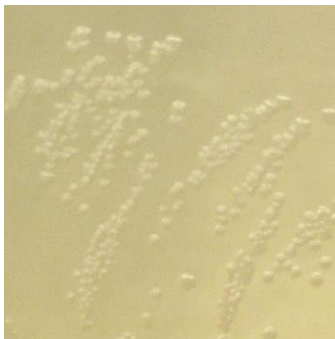
²*S. capitis*, strain SK14 was deposited by Guillermo I. Perez-Perez, D.Sc., Associate Professor of Medicine, Departments of Medicine and Microbiology, School of Medicine, New York University, New York, New York, USA. HM-117 lot 70010884 was produced by the inoculation of BEI Resources HMS-117 lot 61234499 into Nutrient broth and incubated for 1 day at 37°C in an aerobic atmosphere. Broth inoculum was added to Nutrient agar kolles, which were grown for 1 day at 37°C in an aerobic atmosphere to produce this lot.

³1 day at 37°C in an aerobic atmosphere on Nutrient agar

⁴Also consistent with *S. caprae*, *S. epidermis* and *S. saccharolyticus*

⁵Purity of this lot was assessed for 7 days at 37°C in aerobic atmosphere with 5% CO₂ on Nutrient agar.

Figure 1: Colony Morphology



30 MAR 2018

Program Manager or designee, ATCC Federal Solutions

ATCC®, on behalf of BEI Resources, hereby represents and warrants that the material provided under this certificate has been subjected to the tests and procedures specified and that the results described, along with any other data provided in this certificate, are true and accurate to the best of ATCC®'s knowledge.

ATCC® is a trademark of the American Type Culture Collection.

You are authorized to use this product for research use only. It is not intended for human use.

