

***Lactobacillus crispatus*, Strain EX849587VC01**

**Catalog No. HM-370**

**Product Description:** *Lactobacillus crispatus* (*L. crispatus*), strain EX849587VC01 was isolated from a human mid-vaginal wall in March 2010 in Richmond, Virginia, USA.

**Lot<sup>1,2</sup>: 70010076**

**Manufacturing Date: 09NOV2017**

TEST	SPECIFICATIONS	RESULTS
<b>Phenotypic Analysis</b> Cellular morphology Colony morphology <sup>3</sup>  Motility VITEK® MS (MALDI-TOF)	Gram-positive rod Report results  Report results <i>L. crispatus</i>	Gram-positive rod Circular, raised, entire, and opaque (Figure 1) Non-motile <i>L. crispatus</i> (99.9%)
<b>Genotypic Analysis</b> Sequencing of 16S ribosomal RNA gene (~ 780 base pairs)	≥ 99% sequence identity to <i>L. crispatus</i> type strain (GenBank: AF257097.1)	100% sequence identity to <i>L. crispatus</i> type strain (GenBank: AF257097.1)
<b>Purity (post-freeze)<sup>4</sup></b>	Consistent with expected colony morphology	Consistent with expected colony morphology
<b>Viability (post-freeze)<sup>3</sup></b>	Growth	Growth

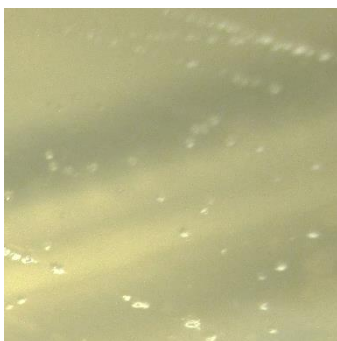
<sup>1</sup>Quality control of HMP material is only performed to demonstrate that the material distributed by BEI Resources is identical to the deposited material. It should not be considered a complete characterization of the deposited organism.

<sup>2</sup>*L. crispatus*, strain EX849587VC01 was deposited by Professor Gregory A. Buck, Director, Center for the Study of Biological Complexity, Department of Microbiology and Immunology, Virginia Commonwealth University Medical Center, Richmond, Virginia, USA. HM-370 lot 70010076 was produced by the inoculation of BEI Resources HMS-370 lot 59852197 into Lactobacilli MRS broth and incubated for 2 days at 37°C in an aerobic atmosphere with 5% CO<sub>2</sub>. The material from the initial growth was passaged once in Lactobacilli MRS broth for 1 day at 37°C in an aerobic atmosphere with 5% CO<sub>2</sub> to produce this lot.

<sup>3</sup>1 day at 37°C in an aerobic atmosphere with 5% CO<sub>2</sub> on Lactobacilli MRS agar

<sup>4</sup>Purity of this lot was assessed for 7 days at 37°C in an aerobic atmosphere with 5% CO<sub>2</sub> on Tryptic Soy agar with 5% defibrinated sheep blood.

**Figure 1: Colony Morphology**



11 APR 2018

Program Manager or designee, ATCC Federal Solutions

ATCC<sup>®</sup>, on behalf of BEI Resources, hereby represents and warrants that the material provided under this certificate has been subjected to the tests and procedures specified and that the results described, along with any other data provided in this certificate, are true and accurate to the best of ATCC<sup>®</sup>'s knowledge.

ATCC<sup>®</sup> is a trademark of the American Type Culture Collection.

You are authorized to use this product for research use only. It is not intended for human use.

