

Genomic DNA from *Escherichia coli*, Strain MDL 4445

Catalog No. NR-4643

Product Description: Genomic DNA was isolated from a preparation of *Escherichia coli*, strain MDL 4445, serotype O157:H7. This strain was isolated in California in 2006 due to an outbreak linked to spinach consumption.

Lot¹: 57952044

Manufacturing Date: 29FEB2008

111

TEST	SPECIFICATIONS	RESULTS
Sequencing of 16S Ribosomal RNA Gene (~ 1440 bp)	Identical to BEI Resources NR-4389 Consistent with <i>Escherichia coli</i>	Identical to BEI Resources NR-4389 Consistent with <i>Escherichia coli</i> ²
Agarose Gel Electrophoresis	High molecular weight chromosomal DNA	High molecular weight chromosomal DNA (Figure 1)
Concentration by PicoGreen® Measurement	4 to 6 µg in 25 to 100 µL per vial	6.0 µg in 56 µL per vial (107 µg/mL)
Functional Activity by PCR Amplification 16S ribosomal RNA gene	~ 1500 bp amplicon	~ 1500 bp amplicon
OD₂₆₀/OD₂₈₀ Ratio	1.7 to 1.9	1.9
Bacterial Inactivation 10% of total yield plated on Tryptic Soy Agar ^{3,4}	No viable bacteria detected	No viable bacteria detected

¹The bacterial preparation used for extraction of genomic DNA was produced by inoculation of the deposited material into Tryptic Soy Broth. After incubation for 24 hours at 37°C, genomic DNA was extracted using proprietary technology.

²Also consistent with *Shigella* species.

³7 days at 37°C in an aerobic atmosphere.

⁴An extraction procedure was used that has been shown to consistently inactivate 100% of Gram-negative bacteria.

Date: 02 MAY 2008

Signature: Signature on File

Title: Technical Manager, BEI Authentication or designee

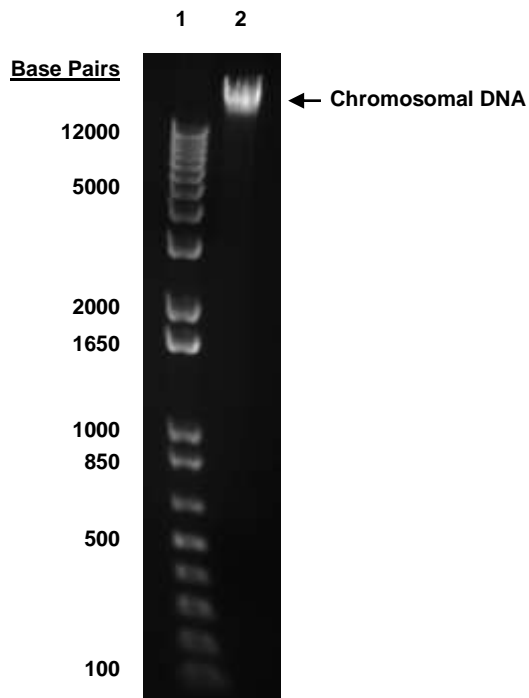
ATCC®, on behalf of BEI Resources, hereby represents and warrants that the material provided under this certificate has been subjected to the tests and procedures specified and that the results described, along with any other data provided in this certificate, are true and accurate to the best of ATCC®'s knowledge.

ATCC® is a trademark of the American Type Culture Collection.

You are authorized to use this product for research use only. It is not intended for human use.



Figure 1



Lane 1: Invitrogen™ TrackIt™ 1 Kb Plus DNA Ladder
Lane 2: 200 ng of NR-4643