

Bacillus cereus, Strain G9241

Catalog No. NR-9564

Product Description: *Bacillus cereus* (*B. cereus*) is a Gram-positive, spore-forming, facultative aerobe. This organism is a ubiquitous, opportunistic pathogen that can cause food poisoning in infected individuals.

Lot¹: 58177740

Manufacturing Date: 30APR2008

TEST	SPECIFICATIONS	RESULTS
Phenotypic Analysis Cellular morphology Colony morphology ² Tryptic Soy Agar Tryptic Soy Agar with 5% sheep blood Sporulation Motility β-hemolysis Capsule (India ink staining) Tenacious Nitrate reduction Analytical profile index (API [®] 50 CHB) FAME analysis	Gram-positive rod Report results Report results Positive Motile Hemolytic Negative Report results Positive Consistent with <i>B. cereus</i> Consistent with <i>B. cereus</i> group	Gram-positive rod Irregular, low convex, slightly undulate, opaque (Figure 1) Irregular, low convex, slightly undulate, opaque (Figure 2) Positive Motile ³ Hemolytic Negative Report results Positive Consistent with <i>B. cereus</i> Consistent with <i>B. cereus</i> group
Genotypic Analysis Sequencing of 16S ribosomal RNA gene (~ 1400 bp)	Identical to GenBank: AY425946 Consistent with <i>B. cereus</i> group	Identical to GenBank: AY425946 Consistent with <i>B. cereus</i> group ⁴
PCR Assay of Extracted DNA 16S ribosomal RNA gene	~ 1500 bp amplicon	~ 1500 bp amplicon
Viability (post-freeze)²	Growth	Growth

¹NR-9564 was produced by inoculation of Tryptic Soy Broth with the deposited material and grown 24 hours at 37°C. Broth inoculum was added to Kolles which were grown 24 hours at 37°C to produce this lot.

²24 hours at 37°C and aerobic atmosphere.

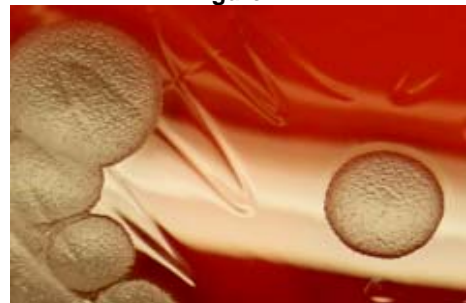
³Some motile cells were observed. Confirmation of motility for *B. cereus* may require special conditions. See Luna, V. A., et al. "Use of Two Selective Media and a Broth Motility Test Can Aid in Identification or Exclusion of *Bacillus anthracis*." *J. Clin. Microbiol.* 43 (2005):4336-4341. PubMed: 16145074.

⁴*Bacillus cereus* group species (*B. cereus*, *B. thuringiensis*, *B. mycoides*, and *B. anthracis*) cannot be classified based on 16S sequence (Spencer, R. C. "Bacillus anthracis." *J. Clin. Pathol.* 56 (2003): 182-187. PubMed: 12610093).

Figure 1



Figure 2



Date: 17 June 2008

Signature: Signature on file

Title: Technical Manager, BEI Authentication or designee

ATCC[®], on behalf of BEI Resources, hereby represents and warrants that the material provided under this certificate has been subjected by the contractor to the tests and procedures specified and that the results described, along with any other data provided in this certificate, are true and accurate to the best of ATCC[®]'s knowledge.

ATCC[®] is a trademark of the American Type Culture Collection.
You are authorized to use this product for research use only. It is not intended for human use.