

## Genomic DNA from *Escherichia coli*, Strain BDMS 770

**Catalog No. NR-3048**

**Product Description:** Genomic DNA was isolated from a preparation of enterohemorrhagic *Escherichia coli* (EHEC), strain BDMS 770, serotype O157:H7.

**Lot<sup>1</sup>: 7559646**

**Manufacturing Date: 10AUG2006**

TEST	SPECIFICATIONS	RESULTS
<b>Sequencing of 16S Ribosomal RNA Gene (~ 460 bp)</b>	Identical to BEI Resources NR-10 Consistent with <i>Escherichia coli</i>	Identical to BEI Resources NR-10 Consistent with <i>Escherichia coli</i> <sup>2</sup>
<b>Presence of Plasmid Confirmed by PCR Amplification pO157</b>	Confirmed	Confirmed
<b>Agarose Gel Electrophoresis</b>	High molecular weight chromosomal DNA	High molecular weight chromosomal DNA (Figure 1)
<b>Concentration by PicoGreen<sup>®</sup> Measurement</b>	4 to 6 µg in 25 to 100 µL per vial	4.7 µg in 31 µL per vial (151 µg/mL)
<b>Functional Activity by PCR Amplification</b> 16S ribosomal RNA gene Gene-length DNA from pO157 ( <i>hlyA</i> virulence marker) Virulence markers on chromosome <sup>3</sup> <i>stx1</i> <i>stx2</i> <i>eaeA</i>	~ 1500 bp amplicon ~ 3200 bp amplicon  ~ 349 bp amplicon ~ 404 bp amplicon ~ 526 bp amplicon	~ 1500 bp amplicon ~ 3200 bp amplicon  ~ 349 bp amplicon ~ 404 bp amplicon ~ 526 bp amplicon
<b>OD<sub>260</sub>/OD<sub>280</sub> Ratio</b>	1.7 to 1.9	1.9
<b>Bacterial Inactivation</b> 10% of total yield plated on Tryptic Soy Agar <sup>4,5</sup>	No viable bacteria detected	No viable bacteria detected

<sup>1</sup>The bacterial preparation used for extraction of genomic DNA was produced by inoculation of BEI Resources NR-10 (Lot: 3592828) onto Tryptic Soy Agar. After incubation for 20 hours at 37°C, genomic DNA was extracted using proprietary technology.

<sup>2</sup>Also consistent with *Shigella* species.

<sup>3</sup>Kimata, K., et al. "Rapid Categorization of Pathogenic *Escherichia coli* by Multiplex PCR." *Microbiol. Immunol.* 49 (2005): 485-492. PubMed: 15965295.

<sup>4</sup>7 days at 37°C in an aerobic atmosphere.

<sup>5</sup>An extraction procedure was used that has been shown to consistently inactivate 100% of Gram-negative bacteria.

**Date:** 09 July 2008

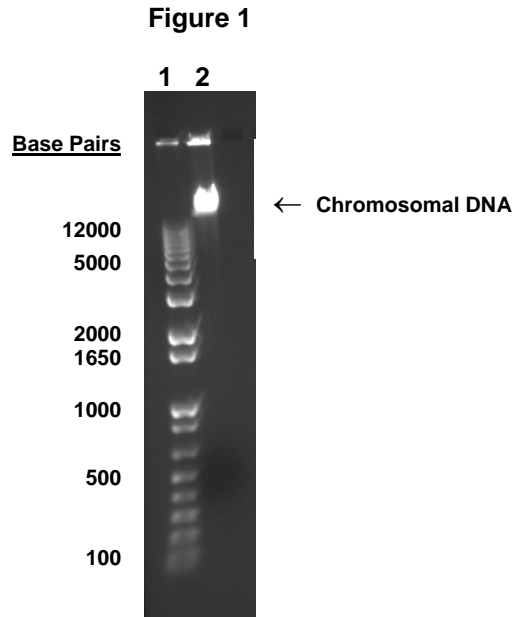
**Signature:** Signature on file

**Title:** Technical Manager, BEI Authentication or designee

ATCC<sup>®</sup>, on behalf of BEI Resources, hereby represents and warrants that the material provided under this certificate has been subjected to the tests and procedures specified and that the results described, along with any other data provided in this certificate, are true and accurate to the best of ATCC<sup>®</sup>'s knowledge.

ATCC<sup>®</sup> is a trademark of the American Type Culture Collection.

You are authorized to use this product for research use only. It is not intended for human use.



Lane 1: Invitrogen™ 1 Kb Plus DNA Ladder™  
Lane 2: 200 ng of NR-3048