

Capnocytophaga sp., Oral Taxon 336, Strain F0502

Catalog No. HM-840

Product Description: *Capnocytophaga* sp., Oral Taxon 336, strain F0502 was isolated in September 2008 from molar tooth supra-gingival dental plaque of a 3-year-old male patient with no dental caries in Boston, Massachusetts, USA.

Lot^{1,2}: 70012257

Manufacturing Date: 14FEB2018

TEST	SPECIFICATIONS	RESULTS
Phenotypic Analysis Cellular morphology Colony morphology ³ Motility (wet mount) VITEK® MS (MALDI-TOF)	Gram-negative rods Report results Report results <i>Capnocytophaga</i> sp.	Gram-negative rods Irregular, low convex, undulate, opaque, smooth and yellow (Figure 1) Motile <i>Capnocytophaga ochracea</i> (99.9%)
Genotypic Analysis Sequencing of 16S ribosomal RNA gene (~ 740 base pairs)	≥ 99% sequence identity to <i>Capnocytophaga</i> sp., Oral Taxon 336, Strain F0502 (GenBank: ATCI01000028.1)	100% sequence identity to <i>Capnocytophaga</i> sp., Oral Taxon 336, Strain F0502 (GenBank: ATCI01000028.1) ⁴
Purity (post-freeze) Anaerobic growth ⁵ Aerobic growth ⁶	Consistent with expected colony morphology Consistent with expected colony morphology	Consistent with expected colony morphology Consistent with expected colony morphology
Viability (post-freeze)³	Growth	Growth

¹Quality control of HMP material is only performed to demonstrate that the material distributed by BEI Resources is identical to the deposited material. It should not be considered a complete characterization of the deposited organism.

²*Capnocytophaga* sp., Oral Taxon 336, strain F0502 was deposited by Floyd E. Dewhirst, D.D.S., Ph.D., Senior Member of the Staff, Department of Microbiology and Jacques Izard, Assistant Member of the Staff, Department of Molecular Genetics, The Forsyth Institute, Cambridge, Massachusetts, USA. The deposited material was inoculated into Trypticase Soy Yeast Extract broth and an aliquot was inoculated into Modified Chopped Meat broth which was incubated for 3 days at 37°C in an anaerobic atmosphere (< 5% O₂; Remel™ Pack-Anaero™). The material from the initial growth was passaged once in Modified Chopped Meat broth for 2 days at 37°C in an anaerobic atmosphere to produce this lot.

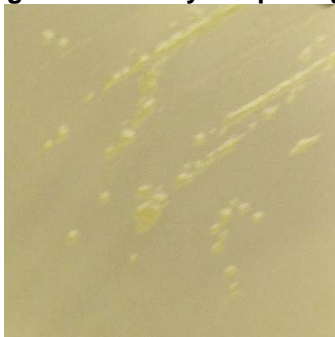
³3 days at 37°C in an anaerobic atmosphere on Trypticase Soy Yeast Extract agar

⁴Also consistent with *Capnocytophaga ochracea*

⁵Purity of this lot was assessed for 7 days at 37°C in an anaerobic atmosphere on Trypticase Soy Yeast Extract agar.

⁶Purity of this lot was assessed for 7 days at 37°C in an aerobic atmosphere with 5% CO₂ on Tryptic Soy agar with 5% defibrinated sheep blood.

Figure 1: Colony Morphology



23 APR 2018

Program Manager or designee, ATCC Federal Solutions

ATCC[®], on behalf of BEI Resources, hereby represents and warrants that the material provided under this certificate has been subjected to the tests and procedures specified and that the results described, along with any other data provided in this certificate, are true and accurate to the best of ATCC[®]'s knowledge.

ATCC[®] is a trademark of the American Type Culture Collection.

You are authorized to use this product for research use only. It is not intended for human use.

