

Cowpox Virus, Brighton Red Recombinant Expressing Enhanced Green Fluorescent Protein

Catalog No. NR-9597

This reagent is the property of the U.S. Government.

Product Description: Cell lysate and supernatant from infected African green monkey MA-104 Clone 1 cells¹ infected with cowpox virus, Brighton Red recombinant expressing enhanced green fluorescent protein.

Lot²: 58147641

Manufacturing Date: 15MAR2008

TEST	SPECIFICATIONS	RESULTS
Identification by Infectivity in MA-104 Clone 1 Cells	Cell rounding and cell lysis	Cell rounding and cell lysis (Figure 1)
Identification by Fluorescent Microscopy	Green fluorescent cells	Green fluorescent cells (Figure 2)
Genotypic Analysis Sequencing hemagglutinin gene (~ 1090 bp)	Identical to GenBank AF482758.2 Consistent with cowpox virus	Identical to GenBank AF482758.2 Consistent with cowpox virus
PCR Assay of Extracted DNA Hemagglutinin gene Polymerase VO75 gene	~ 1220 bp amplicon ~ 3000 bp amplicon	~ 1220 bp amplicon ~ 3000 bp amplicon
Titer by Plaque Assay in VERO C1008 (E6) Cells³	Report results	3.0 x 10 ⁷ pfu/mL ⁴
Sterility (BacT/ALERT[®] 3D Microbial Detection System) 14-day incubation of NR-9597: i NST culture bottle, 32°C, anaerobic i AST culture bottle, 32°C, aerobic	No growth No growth	No growth No growth
Mycoplasma Contamination Agar and broth culture (14-day incubation at 37°C) DNA Detection by PCR of Test Article nucleic acid	None detected None detected	None detected None detected

¹MA-104 Clone 1: BEI Resources NR-595; also available as ATCC[®] CRL-2378.1[™]

²Grown in Minimum Essential Medium containing Earle's salts and non-essential amino acids (Invitrogen[™] 10370) supplemented with 2% irradiated fetal bovine serum (Cambrex[®] 14-471F), 2 mM L-glutamine (Invitrogen[™] 25030), and 1 mM sodium pyruvate (Invitrogen[™] 11360) for 3 days at 37°C with 5% CO₂

³VERO C1008 (E6) cells: ATCC[®] CRL-1586[™]; also available as BEI Resources NR-596

⁴3 days at 37°C and 5% CO₂

Figure 1

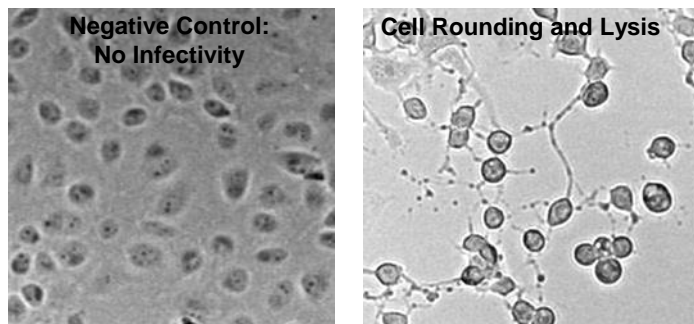
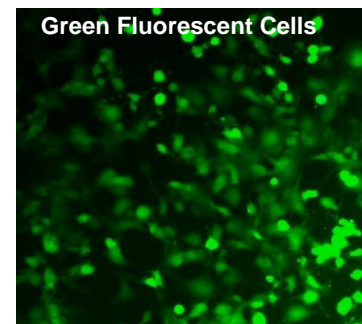


Figure 2



Date: 31 JUL 2008

Signature: Signature on File

Title: Technical Manager, BEI Authentication or designee

ATCC®, on behalf of BEI Resources, hereby represents and warrants that the material provided under this certificate has been subjected to the tests and procedures specified and that the results described, along with any other data provided in this certificate, are true and accurate to the best of ATCC®'s knowledge.

ATCC® is a trademark of the American Type Culture Collection.
You are authorized to use this product for research use only. It is not intended for human use.

