

***Streptococcus pneumoniae*, Strain OREP3**

Catalog No. NR-13388

Product Description: The antibiotic-resistant variant *Streptococcus pneumoniae* (*S. pneumoniae*), strain OREP3 was derived from human wild-type *S. pneumoniae*, strain Wu2 by natural selection using increasing concentrations of optochin.

Lot¹: 70015161

Manufacturing Date: 10MAY2018

TEST	SPECIFICATIONS	RESULTS
Phenotypic Analysis Cellular morphology Colony morphology ² Hemolysis ² Motility (wet mount) Biochemical tests: Catalase VITEK [®] MS (MALDI-TOF)	Gram-positive cocci Report results α-hemolytic Report results Report results <i>S. pneumoniae</i>	Gram-positive cocci Circular, low convex, entire, smooth, mucoid and gray (Figure 1) α-hemolytic Non-motile Negative <i>S. pneumoniae</i> (99.9%)
Antibiotic Susceptibility Profile Hardydisk [™] for differentiation of alpha-hemolytic <i>S. pneumoniae</i> Optochin ³	Resistant	Resistant (6mm)
Genotypic Analysis Sequencing of 16S ribosomal RNA gene (~ 1480 base pairs)	≥ 99% sequence identity to <i>S. pneumoniae</i> type strain (GenBank: NR_028665.1)	99.9% sequence identity to <i>S. pneumoniae</i> type strain (GenBank: NR_028665.1) ⁴
Purity (post-freeze)⁵	Growth consistent with expected colony morphology	Growth consistent with expected colony morphology
Viability (post-freeze)²	Growth	Growth

¹NR-13389 lot 70015161 was produced by the inoculation of depositor's material into Todd-Hewitt broth containing 0.5% (w/v) yeast extract and incubated for 1 day at 37°C in an aerobic atmosphere with 5% CO₂. Broth inoculum was added to Tryptic Soy agar with 5% defibrinated sheep blood kolles, which were grown for 1 day at 37°C in an aerobic atmosphere with 5% CO₂ to produce this lot.

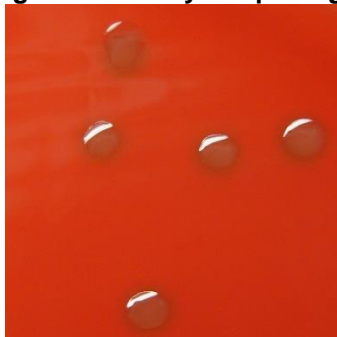
²1 day at 37°C in an aerobic atmosphere with 5% CO₂ on Tryptic Soy agar with 5% defibrinated sheep blood

³Test performed using optochin (Hardy Diagnostics catalog no. Z7011)

⁴Also consistent with other *Streptococcus* species

⁵Purity of this lot was assessed for 7 days at 37°C in an aerobic atmosphere with 5% CO₂ on Tryptic Soy agar with 5% defibrinated sheep blood.

Figure 1: Colony Morphology



/Heather Couch/

Heather Couch

21 JUN 2018

Program Manager or designee, ATCC Federal Solutions

ATCC[®], on behalf of BEI Resources, hereby represents and warrants that the material provided under this certificate has been subjected to the tests and procedures specified and that the results described, along with any other data provided in this certificate, are true and accurate to the best of ATCC[®]'s knowledge.

ATCC[®] is a trademark of the American Type Culture Collection.

You are authorized to use this product for research use only. It is not intended for human use.

