

Streptococcus pyogenes, Strain MGAS9882

Catalog No. NR-15272

Product Description: *Streptococcus pyogenes* (*S. pyogenes*), strain MGAS9882, serotype M3 was isolated in January 2000 from a patient in Ontario, Canada with a soft tissue infection.

Lot¹: 70015102

Manufacturing Date: 27APR2018

| TEST | SPECIFICATIONS | RESULTS |
|--|--|---|
| Phenotypic Analysis Cellular morphology Colony morphology ² Hemolysis ³ Motility (wet mount) Biochemical tests: Catalase VITEK [®] MS (MALDI-TOF) | Gram-positive cocci Report results β-hemolytic Report results Negative <i>S. pyogenes</i> | Gram-positive cocci Circular, convex, entire, smooth and cream (Figure 1) β-hemolytic Non-motile Negative <i>S. pyogenes</i> (99.9%) |
| Genotypic Analysis Sequencing of 16S ribosomal RNA gene (~1200 base pairs) | ≥ 99% sequence identity to <i>S. pyogenes</i> type strain (GenBank: ATXR01000029.1) | 100% sequence identity to <i>S. pyogenes</i> type strain (GenBank: ATXR01000029.1) |
| Purity (post-freeze)⁴ | Growth consistent with expected colony morphology | Growth consistent with expected colony morphology |
| Viability (post-freeze)² | Growth | Growth |

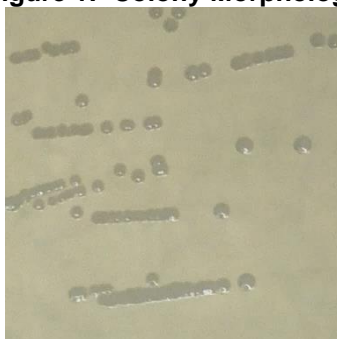
¹NR-15272 lot 70015102 was produced by the inoculation BEI Resources NRS-15272 lot 59586800 into Tryptic Soy broth and incubated for 1 day at 37°C in an aerobic atmosphere with 5% CO₂. Broth inoculum was added to Tryptic Soy agar with 5% defibrinated sheep blood kolles, which were grown for 1 day at 37°C in an aerobic atmosphere with 5% CO₂ to produce this lot.

²1 day at 37°C in an aerobic atmosphere with 5% CO₂ on Tryptic Soy agar

³1 day at 37°C in an aerobic atmosphere with 5% CO₂ on Tryptic Soy agar with 5% defibrinated sheep blood

⁴Purity of this lot was assessed for 7 days at 37°C in an aerobic atmosphere with 5% CO₂ on Tryptic Soy agar.

Figure 1: Colony Morphology



/Heather Couch/
 Heather Couch

26 JUN 2018

Program Manager or designee, ATCC Federal Solutions

ATCC[®], on behalf of BEI Resources, hereby represents and warrants that the material provided under this certificate has been subjected to the tests and procedures specified and that the results described, along with any other data provided in this certificate, are true and accurate to the best of ATCC[®]'s knowledge.

ATCC[®] is a trademark of the American Type Culture Collection.

You are authorized to use this product for research use only. It is not intended for human use.

