

***Veillonella* sp., Strain 6_1_27**

Catalog No. HM-49

Product Description: *Veillonella* sp., strain 6_1_27 was isolated from rectal biopsy tissue taken from a healthy, 59-year-old male patient undergoing a colon cancer screen procedure in Alberta, Canada in 2007.

Lot^{1,2}: 70014601

Manufacturing Date: 26APR2018

TEST	SPECIFICATIONS	RESULTS
Phenotypic Analysis Cellular morphology Colony morphologies ^{3,4} Motility (wet mount)	Gram-negative cocci Report results Report results	Gram-negative cocci Colony type 1: Circular, convex, entire, smooth and yellow (Figure 1) Colony type 2: Punctiform and translucent (Figure 1) Non-motile
Genotypic Analysis Sequencing of 16S ribosomal RNA gene (~ 1500 base pairs)	≥ 99% sequence identity to <i>Veillonella</i> sp., strain 6-1-27 (GenBank: ADCW01000016.1)	99.8% sequence identity to <i>Veillonella</i> sp., strain 6-1-27 (GenBank: ADCW010000016.1)
Purity (post-freeze) Anaerobic growth ⁵ Aerobic growth ⁶	Consistent with expected colony morphology No growth	Consistent with expected colony morphology No growth
Viability (post-freeze)²	Growth	Growth

¹Quality control of HMP material is only performed to demonstrate that the material distributed by BEI Resources is identical to the deposited material. It should not be considered a complete characterization of the deposited organism.

²*Veillonella* sp., strain 6_1_27 was deposited by Professor Emma Allen-Vercoe, Department of Molecular and Cellular Biology, University of Guelph, Guelph, Ontario, Canada. HM-49 lot 70014601 was produced by inoculation of BEI Resources HMS-49 lot 60896598 into Reinforced Clostridial broth with sodium lactate and incubated for 2 days at 37°C in an anaerobic atmosphere (< 5% O₂; Remel™ Pack-Anaero™). The material from the initial growth was passaged once in Reinforced Clostridial broth with sodium lactate for 1 day at 37°C in an anaerobic atmosphere to produce this lot.

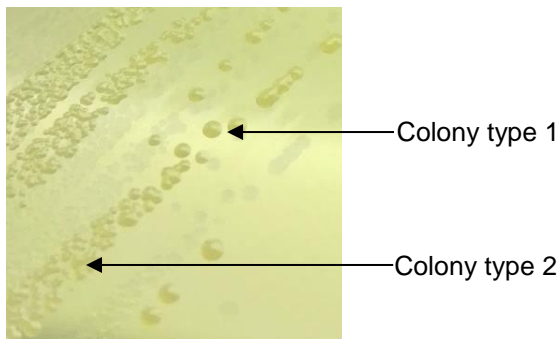
³2 days at 37°C in an anaerobic atmosphere on Reinforced Clostridial broth with sodium lactate

⁴Two colony types were observed. Each colony type reverted back to a blend of both types after 6 days of incubation at 37°C in an anaerobic atmosphere on Reinforced Clostridial broth with sodium lactate.

⁵Purity of this lot was assessed for 8 days at 37°C in an anaerobic atmosphere on Tryptic Soy agar with 5% defibrinated sheep blood.

⁶Purity of this lot was assessed for 8 days at 37°C in an aerobic atmosphere with 5% CO₂ on Tryptic Soy agar with 5% defibrinated sheep blood.

Figure 1: Colony Morphology



/Heather Couch/
Heather Couch

27 JUN 2018

Program Manager or designee, ATCC Federal Solutions

ATCC®, on behalf of BEI Resources, hereby represents and warrants that the material provided under this certificate has been subjected to the tests and procedures specified and that the results described, along with any other data provided in this certificate, are true and accurate to the best of ATCC®'s knowledge.

ATCC® is a trademark of the American Type Culture Collection.

You are authorized to use this product for research use only. It is not intended for human use.

