

***Mycobacterium leprae* Lipoarabinomannan (LAM)**

Catalog No. NR-19348

This reagent is the tangible property of the U.S. Government.

Product Description: NR-19348 is a preparation of lipoarabinomannan (LAM) derived from the cell wall of *Mycobacterium leprae* (*M. leprae*) extracted from a pool of infected armadillo liver and spleen tissue. LAM possesses many biological activities including immunogenicity, induction of TNF and the release of other cytokines, and inhibition of antigen processing. The nonreducing termini of LAM from *M. leprae* are not capped with mannose, unlike that of *M. tuberculosis* H37Rv.

Lot: 64091716

Manufacturing Date: 25SEP2017

Production and QC testing were performed by Colorado State University (CSU). The CSU documentation for lot 17.M.Lep.9.25.JMR.LAM is attached.

ATCC®, on behalf of BEI Resources, hereby represents and warrants that the material provided under this certificate has been subjected by the contractor to the tests and procedures specified and that the results described, along with any other data provided in this certificate, are true and accurate to the best of ATCC®'s knowledge.

ATCC® is a trademark of the American Type Culture Collection.

You are authorized to use this product for research use only. It is not intended for human use.



WORK SHEET FOR LIPOARABINOMANNAN

General Information

Lot Number: 17.M.Lep.9.25.JMR. LAM
Species: *Mycobacterium leprae*
Strain: NHDP-55

Purification Information

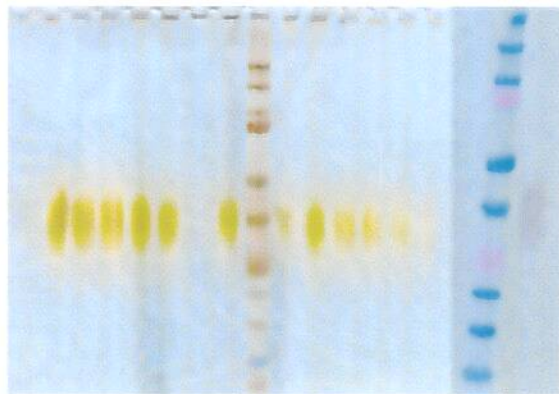
Starting material (lot #): NHDP-55 Pool 2017
Cell amount (wet weight): 147.15mg
Protocol used (SOP #): PP051 (p.1), PP015.3, PP016.4, PP017.2,
Date started: 07/10/17
Date completed: 09/25/17
Notebook; pages: LLP#1 KN,JR,JB pgs 42-45
Additional notes (if applicable):

Quality Control Information

NMR results: pass
Endotoxin amount: 1.32 ng/mg
Total amount of LAM: 2.80 mg
Silver stain date: 08/18/17
Western blot date: 09/22/17
Notebook and page(s): LLP#1 KN,JR,JB p.44
Notebook and page(s): LLP#1 KN,JR,JB p.45
Concentration: 1.5mg/mL
Notebook and page(s): LLP#1 KN,JR,JB p.45
Antibody used: CS35 Notebook and page(s): LLP#1 KN,JR,JB p.45

QC Gel and Western Blot:

Smeg Lam Standards(ug)	LepLam	Smeg Lam Standards
5.0, 4.5, 4.0, 3.5, 3.0	2ul 1ul	2.5, 2.0, 1.5, 1.0, 0.5



Aliquot Information:

28 vials @ 100 µg

Jean M Ryan
(Research Associate)

4/13/18
(date)

C. McChaffy
(Laboratory Supervisor)

4/26/18
(date)