

***Lactobacillus johnsonii*, Strain 135-1-CHN**
Catalog No. HM-643

Product Description: *Lactobacillus johnsonii* (*L. johnsonii*), strain 135-1-CHN was isolated in 2007 from the vaginal mucosa of a Chinese woman.

Lot^{1,2}: 70014605
Manufacturing Date: 25APR2018

TEST	SPECIFICATIONS	RESULTS
Phenotypic Analysis Cellular morphology Colony morphology ³ Motility (wet mount)	Gram-positive rods Report results Report results	Gram-positive rods Irregular, flat, undulate and translucent (Figure 1) Non-motile
Genotypic Analysis Sequencing of 16S ribosomal RNA gene (~ 1510 base pairs)	≥ 99% identical to <i>L. johnsonii</i> type strain	99.9% identical to <i>L. johnsonii</i> type strain (GenBank: ACGR01000047.1) ⁴
Purity (post-freeze)⁵	Consistent with expected colony morphology	Consistent with expected colony morphology
Viability (post-freeze)³	Growth	Growth

¹Quality control of HMP material is only performed to demonstrate that the material distributed by BEI Resources is identical to the deposited material. It should not be considered a complete characterization of the deposited organism.

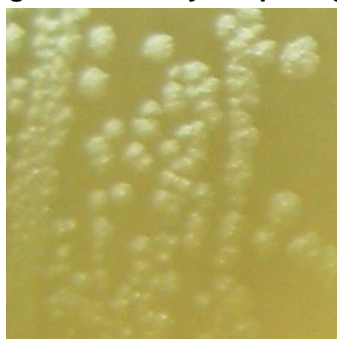
²*L. johnsonii*, strain 135-1-CHN was deposited by Yang Liu, Ph.D., Senior Scientist & Group Leader, Osel Inc., Santa Clara, California, USA. HM-643 lot 70014605 was produced by the inoculation of BEI Resources HMS-643 lot 59905642 into Lactobacilli MRS broth and incubated for 1 day at 37°C in an aerobic atmosphere with 5% CO₂. The material from the initial growth was passaged once in Lactobacilli MRS broth for 1 day at 37°C in an aerobic atmosphere with 5% CO₂ to produce this lot.

³1 day at 37°C in an aerobic atmosphere with 5% CO₂ on Lactobacilli MRS agar

⁴Also consistent with other *Lactobacillus* species

⁵Purity of this lot was assessed for 7 days at 37°C in an aerobic atmosphere with 5% CO₂ on Tryptic Soy agar with 5% defibrinated sheep blood.

Figure 1: Colony Morphology



/Heather Couch/

Heather Couch

17 JUL 2018

Program Manager or designee, ATCC Federal Solutions

ATCC®, on behalf of BEI Resources, hereby represents and warrants that the material provided under this certificate has been subjected by ATCC® to the tests and procedures specified and that the results described, along with any other data provided in this certificate, are true and accurate to the best of ATCC®'s knowledge.

ATCC® is a trademark of the American Type Culture Collection.

You are authorized to use this product for research use only. It is not intended for human use.



BEI Resources

www.beiresources.org

 E-mail: contact@beiresources.org

Tel: 800-359-7370

Fax: 703-365-2898