

***Lactobacillus oris*, Strain F0423**

Catalog No. HM-560

Product Description: *Lactobacillus oris* (*L. oris*), strain F0423 was isolated from a human oral cavity.

Lot^{1,2}: 70016207

Manufacturing Date: 08JUN2018

TEST	SPECIFICATIONS	RESULTS
Phenotypic Analysis Cellular morphology Colony morphology ³ Motility (wet mount)	Gram-positive rods Report results Report results	Gram-positive rods Punctiform (Figure 1) Non-motile
Genotypic Analysis Sequencing of 16S ribosomal RNA gene (~ 1480 base pairs)	≥ 99% sequence identity to <i>L. oris</i> , strain F0423 (GenBank: AFTL01000020.1)	100% sequence identity to <i>L. oris</i> , strain F0423 (GenBank: AFTL01000020.1)
Purity (post-freeze)⁴	Consistent with expected colony morphology	Consistent with expected colony morphology
Viability (post-freeze)³	Growth	Growth

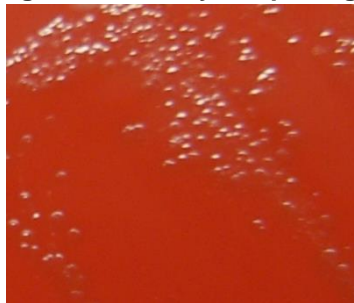
¹Quality control of HMP material is only performed to demonstrate that the material distributed by BEI Resources is identical to the deposited material. It should not be considered a complete characterization of the deposited organism.

²*L. oris*, strain F0423 was deposited by Jacques Izard, Assistant Member of the Staff, Department of Molecular Genetics, The Forsyth Institute, Cambridge, Massachusetts, USA. Lot 70016207 of HM-560 was produced by inoculation of BEI Resources HMS-560 lot 59852328 into Lactobacilli MRS broth, and grown for 2 days at 37°C in an aerobic atmosphere with 5% CO₂. The material from the initial growth was passaged in Lactobacilli MRS broth for 2 days at 37°C in an aerobic atmosphere with 5% CO₂ to produce this lot.

³2 days at 37°C in an aerobic atmosphere with 5% CO₂ on Tryptic Soy agar with 5% defibrinated sheep blood

⁴Purity of this lot was assessed for 7 days at 37°C in an aerobic atmosphere with 5% CO₂ on Tryptic Soy agar with 5% defibrinated sheep blood.

Figure 1: Colony Morphology



/Heather Couch/
Heather Couch

01 AUG 2018

Program Manager or designee, ATCC Federal Solutions

ATCC®, on behalf of BEI Resources, hereby represents and warrants that the material provided under this certificate has been subjected to the tests and procedures specified and that the results described, along with any other data provided in this certificate, are true and accurate to the best of ATCC®'s knowledge.

ATCC® is a trademark of the American Type Culture Collection.
You are authorized to use this product for research use only. It is not intended for human use.

