

***Bacteroides caccae*, Strain CL03T12C61**

Catalog No. HM-728

Product Description: *Bacteroides caccae* (*B. caccae*), strain CL03T12C61 was isolated from healthy adult human feces in Massachusetts, USA.

Lot^{1,2}: 70013563

Manufacturing Date: 04JUN2018

TEST	SPECIFICATIONS	RESULTS
Phenotypic Analysis Cellular morphology Colony morphologies ^{3,4} Motility (wet mount)	Gram-negative rods Report results Report results	Gram-negative rods Colony type 1: Circular, convex, entire, smooth and white (Figure 1) Colony type 2: Circular, flat, entire and translucent (Figure 1) Non-motile
Genotypic Analysis Sequencing of 16S ribosomal RNA gene (~ 1410 base pairs)	≥ 99% sequence identity to <i>B. caccae</i> , strain CL03T12C61 (GenBank: AGXF01000025.1)	100% sequence identity to <i>B. caccae</i> , strain CL03T12C61 (GenBank: AGXF01000025.1)
Purity (post-freeze) Anaerobic growth ⁵ Aerobic growth ⁶	Consistent with expected colony morphology No growth	Consistent with expected colony morphology No growth
Viability (post-freeze)³	Growth	Growth

¹Quality control of HMP material is only performed to demonstrate that the material distributed by BEI Resources is identical to the deposited material. It should not be considered a complete characterization of the deposited organism.

²*B. caccae*, strain CL03T12C61 was deposited by Laurie E. Comstock, Ph.D., Associate Microbiologist, Department of Medicine, Channing Laboratory, Brigham and Women's Hospital, Harvard Medical School, Boston, Massachusetts. HM-728 lot 70013563 was produced by inoculation of BEI Resources HMS-728 lot 61666024 into Modified Reinforced Clostridial broth and incubated for 3 days at 37°C in an anaerobic atmosphere (< 5% O₂; Remel™ Pack-Anaero™). The material from the initial growth was passaged once in Modified Reinforced Clostridial broth for 3 days at 37°C in an anaerobic atmosphere to produce this lot.

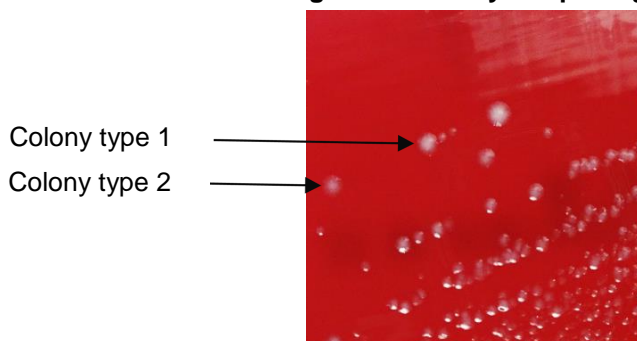
³3 days at 37°C in an anaerobic atmosphere on Tryptic Soy agar with 5% defibrinated sheep blood

⁴Two colony types were observed. Plating of the individual colony types showed that they reverted to the mixed colony type after 3 days of incubation at 37°C in an anaerobic atmosphere on Tryptic Soy agar with 5% defibrinated sheep blood.

⁵Purity of this lot was assessed for 7 days at 37°C in an anaerobic atmosphere on Tryptic Soy agar with 5% defibrinated sheep blood.

⁶Purity of this lot was assessed for 7 days at 37°C in an aerobic atmosphere with 5% CO₂ on Tryptic Soy agar with 5% defibrinated sheep blood.

Figure 1: Colony Morphology



/Heather Couch/

Heather Couch

10 AUG 2018

Program Manager or designee, ATCC Federal Solutions

ATCC[®], on behalf of BEI Resources, hereby represents and warrants that the material provided under this certificate has been subjected by ATCC[®] to the tests and procedures specified and that the results described, along with any other data provided in this certificate, are true and accurate to the best of ATCC[®]'s knowledge.

ATCC[®] is a trademark of the American Type Culture Collection.

You are authorized to use this product for research use only. It is not intended for human use.

