

**Monoclonal Anti-*Mycobacterium tuberculosis* LAM, Clone CS-35 (produced *in vitro*)**

**Catalog No. NR-13811**

This reagent is the tangible property of the U.S. Government.

**Product Description:**

Antibody Class: IgG<sub>3k</sub>

Antibody Designation: CS-35

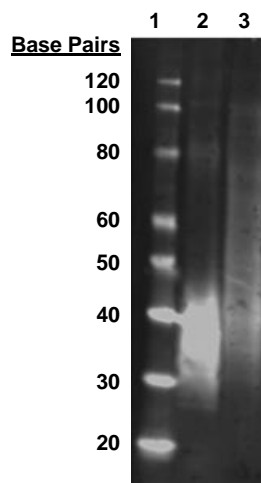
Monoclonal antibody to *Mycobacterium tuberculosis*, strain H37Rv lipoarabinomannan (LAM) was produced in cell culture using a B cell hybridoma generated by the fusion of myeloma cells with immunized mouse splenocytes.

**Lot: 70012685**

**Manufacturing Date: 23MAR2018**

TEST	SPECIFICATIONS	RESULTS
Antibody Class	Report results	IgG <sub>3k</sub>
Functional Activity by Western Blot Cytosol fraction (BEI Resources NR-14835) Culture filtrate protein fraction (BEI Resources NR-14825)	Report results Report results	Reactive (Figure 1) Reactive (Figure 1)
Sterility	0.22 µm filter-sterilized	0.22 µm filter-sterilized

**Figure 1: Functional Activity by Western Blot**



Lane 1: Life Technologies™ MagicMark™ XP Western Protein Standard  
Lane 2: Cytosol fraction (BEI Resources NR-14835)  
Lane 3: Culture filtrate protein fraction (BEI Resources NR-14825)

/Heather Couch/  
Heather Couch

21 AUG 2018

Program Manager or designee, ATCC Federal Solutions

ATCC®, on behalf of BEI Resources, hereby represents and warrants that the material provided under this certificate has been subjected to the tests and procedures specified and that the results described, along with any other data provided in this certificate, are true and accurate to the best of ATCC®'s knowledge.

ATCC® is a trademark of the American Type Culture Collection. You are authorized to use this product for research use only. It is not intended for human use.

