

Genomic DNA from *Clostridium botulinum*, Strain Walls 8G (VPI 4404)

Catalog No. NR-2713

Product Description: Genomic DNA was isolated from a preparation of *Clostridium botulinum* (*C. botulinum*), strain Walls 8G (VPI 4404, BL 4851), serotype F (proteolytic).

Lot¹: 70005630

Manufacturing Date: 17NOV2017

TEST	SPECIFICATIONS	RESULTS
Genotypic Analysis Sequencing of 16S ribosomal RNA gene (~ 1290 base pairs)	≥ 99% sequence identity to <i>C. botulinum</i> , strain Walls 8G (GenBank: LBFH01000001.1)	100% sequence identity to <i>C. botulinum</i> , strain Walls 8G (GenBank: LBFH01000001.1) ²
Agarose Gel Electrophoresis	High molecular weight chromosomal DNA	High molecular weight chromosomal DNA (Figure 1)
Concentration by PicoGreen[®] Measurement	0.7 to 1.5 µg in 25 to 100 µL per vial	0.4 µg in 50 µL per vial (7.5 µg/mL) ³
Amount per vial	0.7 to 1.5 µg	0.4 µg ²
Functional Activity by PCR Amplification 16S ribosomal RNA gene	~ 1500 base pair amplicon	~ 1500 base pair amplicon
OD₂₆₀/OD₂₈₀ Ratio	1.7 to 2.1	2.0
Bacterial Inactivation 10% of total yield plated on agar for 14 days ⁴	No viable bacteria detected	No viable bacteria detected

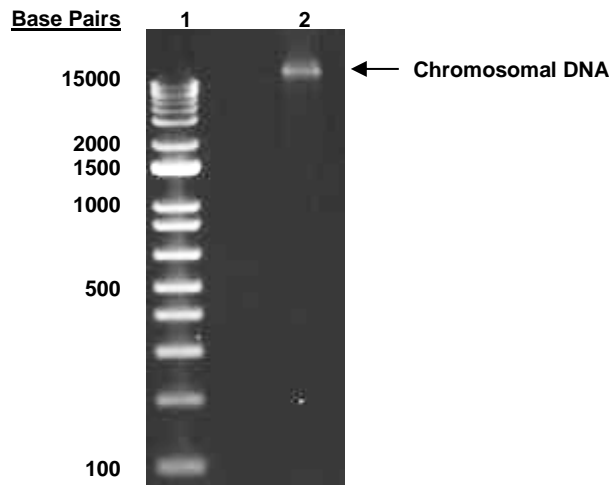
¹The bacterial preparation used for extraction of genomic DNA was produced from BEI Resources NR-272 lot 7364651. Genomic DNA was extracted using proprietary technology, and is provided in TE buffer (10 mM Tris-HCl, 1 mM EDTA, pH ~ 7.4).

²Also consistent with other species in the *C. sporogenes*-*C. botulinum* Group I clade; for more information, see Dobritsa, A. P., et al. "*Clostridium tepidum* sp. nov., a Close Relative of *Clostridium sporogenes* and *Clostridium botulinum* Group I." *Int. J. Syst. Evol. Microbiol.* 67 (2017): 2317-2322. PubMed: 28693684.

³This result is below the specified concentration.

⁴An extraction procedure was used that has been shown to consistently inactivate 100% of Gram-positive and Gram-negative bacteria.

Figure 1: Agarose Gel Electrophoresis



Lane 1: Invitrogen™ TrackIt 1 Kb Plus DNA Ladder™
Lane 2: 75 ng of NR-2713

/Heather Couch/
Heather Couch

21 AUG 2018

Program Manager or designee, ATCC Federal Solutions

ATCC®, on behalf of BEI Resources, hereby represents and warrants that the material provided under this certificate has been subjected to the tests and procedures specified and that the results described, along with any other data provided in this certificate, are true and accurate to the best of ATCC®'s knowledge.

ATCC® is a trademark of the American Type Culture Collection.

You are authorized to use this product for research use only. It is not intended for human use.

