

Shiga Toxin Type 1 Toxoid, Recombinant from *Escherichia coli*

Catalog No. NR-858

This reagent is the tangible property of the U.S. government.

Product Description: NR-858 is a recombinant toxoid of Shiga toxin 1 (Stx1) with genetic mutations (Y89S, E179Q; based on the recombinant sequence) in the catalytic A subunit which render the protein non-toxic. The recombinant protein was expressed in *Escherichia coli* and purified by nickel affinity chromatography.

Lot: 57680169

Manufacturing Date: 01MAY2008

TEST	SPECIFICATIONS	RESULTS
Appearance	Clear and colorless, no particulate matter	Clear and colorless, no particulate matter
SDS-PAGE (SYPRO Orange densitometer scan)	Report results	Dominant bands (Figure 1): Stx1A: ¹ ~ 30, 24 and 21 kDa Stx1B: ~ 8 kDa
Mass Spectrometry	Report results Expected mass: Stx1A: 33534 Da Stx1B: 8513 Da	Measured mass: Stx1A: ¹ 29804, 23470 and 20609 Da Stx1B: 8529 Da
SELDI-TOF Mass Spectrometry of Trypsin Digest	> 50% of total residues accounted for in peptides of expected mass	Stx1A: 65% of total residues accounted for in peptides of expected mass Stx1B: Resistant to trypsin digestion
Concentration by Bicinchoninic Acid Protein Assay	Report results	0.48 mg/mL
Functional Activity by Western Blot Analysis¹ Rabbit polyclonal antibody to Stx1 Carbonic anhydrase	Reactive Non-reactive	Reactive (Figure 2) Non-reactive
Cytotoxicity in Vero Cells (48 hours) NR-858 NR-857 (Shiga Toxin Type 1, Recombinant)	Report results Report results	Non-cytotoxic at 1×10^{-7} M $CD_{50} \sim 1 \times 10^{-14}$ M
Sterility	0.22 μ m filter sterilized	0.22 μ m filter sterilized
Endotoxin Content (Limulus Amoebocyte Lysate assay)	Report results	≤ 100 EU/mg

¹The A subunit of Stx1 is degraded to several slightly smaller bands/sizes than expected. This should not interfere with its use as a negative control for assaying Shiga toxin activity or as an antigen for antibody development.

Figure 1

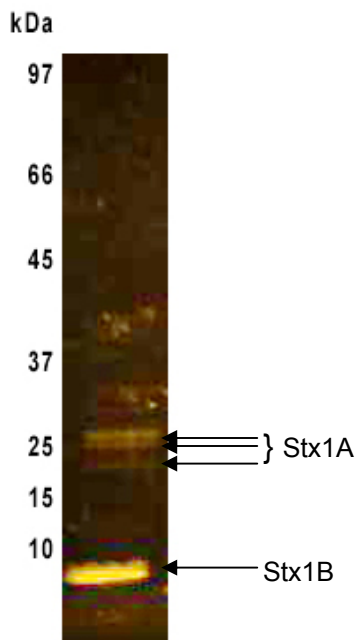
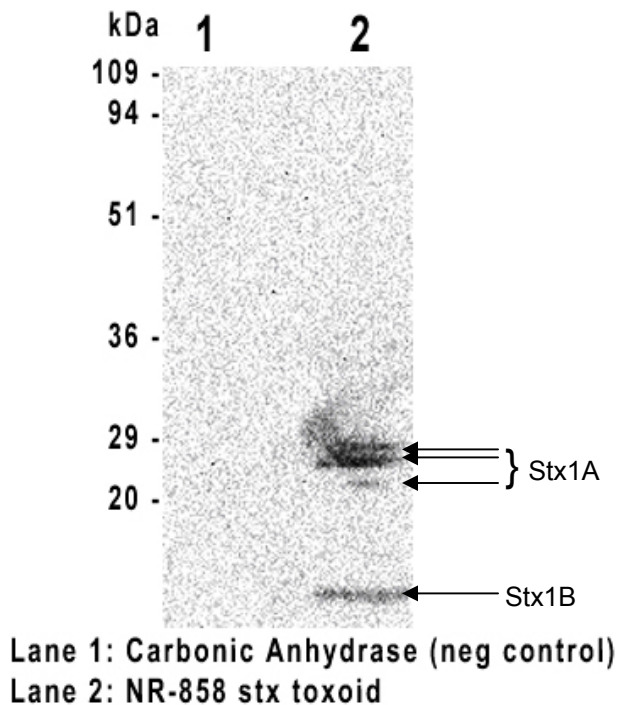


Figure 2



Date: 08 SEP 2008

Signature: Signature on File

Title: Technical Manager, BEI Authentication or designee

ATCC[®], on behalf of BEI Resources, hereby represents and warrants that the material provided under this certificate has been subjected by the contractor to the tests and procedures specified and that the results described, along with any other data provided in this certificate, are true and accurate to the best of ATCC[®]'s knowledge.

ATCC[®] is a trademark of the American Type Culture Collection.
 You are authorized to use this product for research use only. It is not intended for human use.

