

Enterococcus faecalis, Strain SF24413

Catalog No. NR-31971

Product Description: *Enterococcus faecalis* (*E. faecalis*), strain SF24413 was isolated in 2002 from a urine sample obtained in Michigan, USA. It is reported to be resistant to erythromycin, gentamicin and vancomycin.

Lot¹: 70016192

Manufacturing Date: 07JUN2018

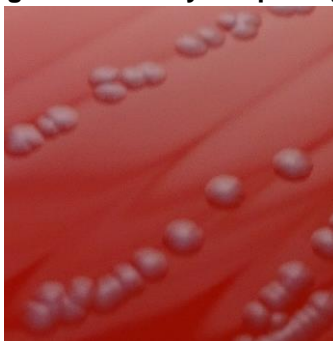
TEST	SPECIFICATIONS	RESULTS
Phenotypic Analysis Cellular morphology Colony morphology ² Hemolysis ² Motility (wet mount) VITEK [®] MS (MALDI-TOF)	Gram-positive cocci Report results Non-hemolytic Report results <i>E. faecalis</i>	Gram-positive cocci Circular, convex, entire, smooth and gray (Figure 1) Non-hemolytic Non-motile <i>E. faecalis</i> (99.9%)
Genotypic Analysis Sequencing of 16S ribosomal RNA gene (~ 1500 base pairs)	≥ 99% sequence identity to <i>E. faecalis</i> , strain SF24413 (GenBank: AJAX01000017.1)	99.9% sequence identity to <i>E. faecalis</i> , strain SF24413 (GenBank: AJAX01000017.1)
Purity (post-freeze)³	Growth consistent with expected colony morphology	Growth consistent with expected colony morphology
Viability (post-freeze)²	Growth	Growth

¹*E. faecalis*, strain SF24413 (also referred to as EnGen0238) was deposited by Michael S. Gilmore, Sir William Osler Professor of Ophthalmology, Department of Ophthalmology, Massachusetts Eye and Ear Infirmary, Boston, Massachusetts, USA. NR-31971 lot 70016192 was produced by inoculation of NRS-31971 lot 61956018 into Tryptic Soy broth and incubated for 1 day at 37°C in an aerobic atmosphere. Broth inoculum was added to Tryptic Soy agar with 5% defibrinated sheep blood kolles, which were grown for 1 day at 37°C in an aerobic atmosphere to produce this lot.

²1 day at 37°C in an aerobic atmosphere on Tryptic Soy agar with 5% defibrinated sheep blood

³Purity of this lot was assessed for 7 days at 37°C in an aerobic atmosphere with 5% CO₂ on Tryptic Soy agar with 5% defibrinated sheep blood.

Figure 1: Colony Morphology



/Heather Couch/

Heather Couch

30 AUG 2018

Program Manager or designee, ATCC Federal Solutions

ATCC®, on behalf of BEI Resources, hereby represents and warrants that the material provided under this certificate has been subjected to the tests and procedures specified and that the results described, along with any other data provided in this certificate, are true and accurate to the best of ATCC®'s knowledge.

ATCC® is a trademark of the American Type Culture Collection.

You are authorized to use this product for research use only. It is not intended for human use.

