

***Bacteroides dorei*, Strain 5_1_36/D4**

Catalog No. HM-29

Product Description: *Bacteroides dorei* (*B. dorei*), strain 5_1_36/D4 was isolated in 2007 from inflamed biopsy tissue taken from the terminal ileum of a 45-year-old male patient with Crohn's disease in Alberta, Canada.

Lot^{1,2}: 70016947

Manufacturing Date: 18JUL2018

TEST	SPECIFICATIONS	RESULTS
Phenotypic Analysis Cellular morphology Colony morphology ³ Motility	Gram-negative rods Report results Report results	Gram-negative rods Circular, low convex, entire, smooth and gray (Figure 1) Non-motile
Genotypic Analysis Sequencing of 16S ribosomal RNA gene (~ 1360 base pairs)	≥ 99% sequence identity to <i>B. dorei</i> , strain 5_1_36/D4 (GenBank: ACDI02000020.1)	100% sequence identity to <i>B. dorei</i> , strain 5_1_36/D4 (GenBank: ACDI02000020.1)
Purity (post-freeze) Anaerobic growth ⁴ Aerobic growth ⁵	Consistent with expected colony morphology No growth	Consistent with expected colony morphology No growth
Viability (post-freeze)⁴	Growth	Growth

¹Quality control of HMP material is only performed to demonstrate that the material distributed by BEI Resources is identical to the deposited material. It should not be considered a complete characterization of the deposited organism.

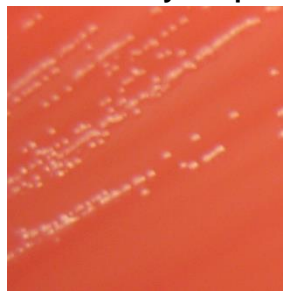
²*B. dorei*, strain 5_1_36/D4 was deposited by Emma Allen-Vercoe, PhD, Department of Molecular and Cellular Biology, University of Guelph, Guelph, Ontario, Canada. Lot 70016947 of HM-29 was produced by the inoculation of BEI Resources HMS-29 lot 62264515 into Modified Chopped Meat broth and incubated for 1 day at 37°C in an anaerobic atmosphere (< 5% O₂; Remel™ Pack-Anaero™). The material from the initial growth was passaged once in Modified Chopped Meat broth for 1 day at 37°C in an anaerobic atmosphere to produce this lot.

³1 day at 37°C in an anaerobic atmosphere on Tryptic Soy agar with 5% defibrinated sheep blood

⁴Purity of this lot was assessed for 7 days at 37°C in an anaerobic atmosphere on Tryptic Soy agar with 5% defibrinated sheep blood.

⁵Purity of this lot was assessed for 7 days at 37°C in an aerobic atmosphere with 5% CO₂ on Tryptic Soy agar with 5% defibrinated sheep blood.

Figure 1: Colony Morphology



/Heather Couch/
Heather Couch

11 OCT 2018

Program Manager or designee, ATCC Federal Solutions

ATCC®, on behalf of BEI Resources, hereby represents and warrants that the material provided under this certificate has been subjected to the tests and procedures specified and that the results described, along with any other data provided in this certificate, are true and accurate to the best of ATCC®'s knowledge.

ATCC® is a trademark of the American Type Culture Collection.

You are authorized to use this product for research use only. It is not intended for human use.



BEI Resources
www.beiresources.org

E-mail: contact@beiresources.org

Tel: 800-359-7370

Fax: 703-365-2898