

Listeria ivanovii, Strain WSLC3009

Catalog No. NR-51326

Product Description: *Listeria ivanovii* (*L. ivanovii*), strain WSLC3009 was isolated in 1976 from a human in Georgia, USA. This strain is a part of the Special Listeria Culture Collection (SLCC) assembled by Professor H. P. Seeliger at the University of Würzburg, Würzburg, Germany.

Lot¹: 70017404

Manufacturing Date: 25JUL2018

TEST	SPECIFICATIONS	RESULTS
Phenotypic Analysis Cellular morphology Colony morphology ² Motility (wet mount) Hemolysis ³ VITEK [®] MS (MALDI-TOF)	Gram-positive rods Report results Report results β-hemolytic <i>L. ivanovii</i>	Gram-positive rods Circular, raised, entire, smooth and cream (Figure 1) Non-motile β-hemolytic <i>L. ivanovii</i> (99.9%)
Genotypic Analysis Sequencing of 16S ribosomal RNA gene (~ 1440 base pairs)	≥ 99% sequence identity to <i>L. ivanovii</i> , strain WSLC3009 (GenBank: CP007172.1)	100% sequence identity to <i>L. ivanovii</i> , strain WSLC3009 (GenBank: CP007172.1) ⁴
Purity (post-freeze)⁵	Consistent with expected colony morphology	Consistent with expected colony morphology
Viability (post-freeze)²	Growth	Growth

¹NR-51326 was produced by inoculation of BEI Resources HMC-583 lot 59549293 into Brain Heart Infusion broth and grown 1 day at 37°C in an aerobic atmosphere. Broth inoculum was added to Brain Heart Infusion agar kolles, which were grown for 1 day at 37°C in an aerobic atmosphere to produce this lot.

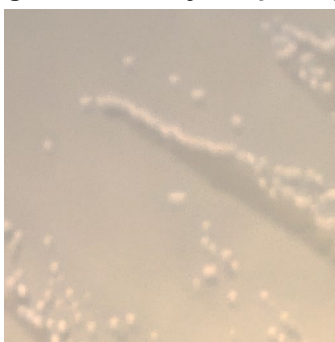
²1 day at 37°C in an aerobic atmosphere on Brain Heart Infusion agar

³1 day at 37°C in an aerobic atmosphere on Tryptic Soy agar with 5% defibrinated sheep blood

⁴Also consistent with other *Listeria* species

⁵Purity of this lot was assessed for 7 days on Brain Heart Infusion agar at 37°C in an aerobic atmosphere with 5% CO₂.

Figure 1: Colony Morphology



/Heather Couch/
Heather Couch

06 NOV 2018

Program Manager or designee, ATCC Federal Solutions

ATCC[®], on behalf of BEI Resources, hereby represents and warrants that the material provided under this certificate has been subjected to the tests and procedures specified and that the results described, along with any other data provided in this certificate, are true and accurate to the best of ATCC[®]'s knowledge.

ATCC[®] is a trademark of the American Type Culture Collection.
You are authorized to use this product for research use only. It is not intended for human use.

