

## Genomic DNA from *Bacillus cereus*, Strain Gibson 971

**Catalog No. NR-4198**

**Product Description:** Genomic DNA was isolated from a preparation of *Bacillus cereus* (*B. cereus*), strain Gibson 971.

**Lot<sup>1</sup>: 57697630**

**Manufacturing Date: 01MAY2007**

TEST	SPECIFICATIONS	RESULTS
<b>Sequencing of 16S Ribosomal RNA Gene</b> (~ 1410 bp)	Consistent with <i>B. cereus</i> group	Consistent with <i>B. cereus</i> group <sup>2</sup>
<b>Agarose Gel Electrophoresis</b>	High molecular weight chromosomal DNA	High molecular weight chromosomal DNA (Figure 1)
<b>Content by PicoGreen<sup>®</sup> Measurement</b>	4 to 6 µg in 25 to 100 µL per vial	4.7 µg in 65 µL per vial (72 µg/mL)
<b>Functional Activity by PCR Amplification</b> 16S ribosomal RNA gene	~ 1500 bp amplicon	~ 1500 bp amplicon
<b>OD<sub>260</sub>/OD<sub>280</sub> Ratio</b>	1.7 to 1.9	1.9
<b>Bacterial Inactivation</b> 10% of total yield plated on Tryptic Soy Agar <sup>3,4</sup>	No viable bacteria detected	No viable bacteria detected

<sup>1</sup>The bacterial preparation used for extraction of genomic DNA was produced by inoculation of BEI Resources NR-606 (Lot: 3931419) into Tryptic Soy Broth (BD 211825). After incubation for 24 hours at 30°C and aerobic atmosphere, genomic DNA was extracted using proprietary technology.

<sup>2</sup>*Bacillus cereus* group species (*B. cereus*, *B. thuringiensis*, *B. mycoides*, and *B. anthracis*) cannot be classified based on 16S sequence (Spencer, R. C. "Bacillus anthracis." *J. Clin. Pathol.* 56 (2003): 182-187. PubMed: 12610093).

<sup>3</sup>7 days at 30°C in an aerobic atmosphere

<sup>4</sup>An extraction procedure was used that has been shown to consistently inactivate 100% of Gram-negative bacteria

**Date:** 14 NOV 2008

**Signature:** Signature on File

**Title:** Technical Manager, BEI Authentication or designee

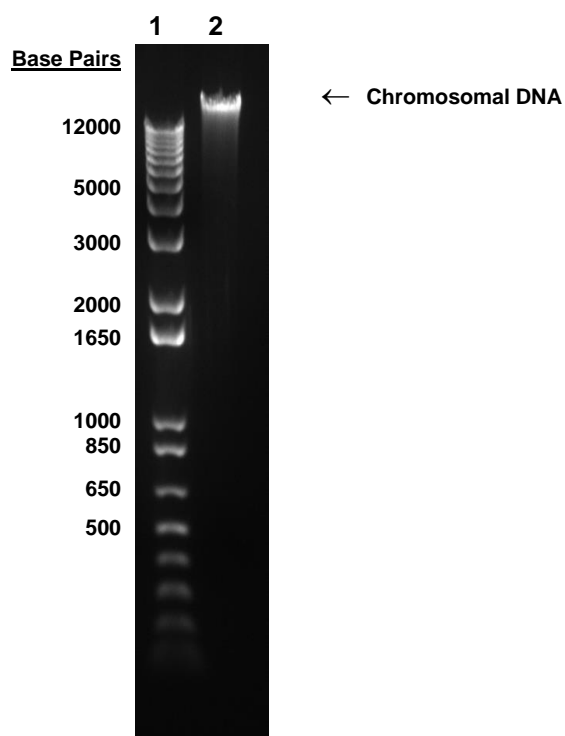
ATCC<sup>®</sup>, on behalf of BEI Resources, hereby represents and warrants that the material provided under this certificate has been subjected to the tests and procedures specified and that the results described, along with any other data provided in this certificate, are true and accurate to the best of ATCC<sup>®</sup>'s knowledge.

ATCC<sup>®</sup> is a trademark of the American Type Culture Collection.

You are authorized to use this product for research use only. It is not intended for human use.



Figure 1



Lane 1: Invitrogen™ TrackIt™ 1 Kb Plus DNA Ladder  
Lane 2: 200 ng of NR-4198