

**Escherichia coli, Strain Ec1643**

**Catalog No. NR-51342**

**Product Description:** *Escherichia coli* (*E. coli*), strain Ec1643, was isolated from the bloodstream of a patient with septicemia. *E. coli*, strain Ec1643 is a host bacterium for phi05\_2388UV, a temperate phage.

**Lot<sup>1</sup>: 70017424**

**Manufacturing Date: 25JUL2018**

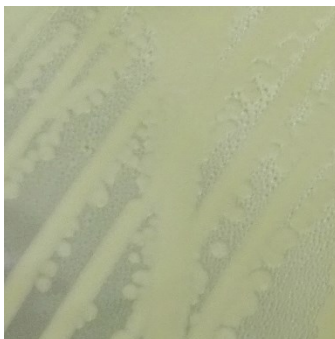
| TEST   | SPECIFICATIONS  | RESULTS   |
|--|---|---|
| <b>Phenotypic Analysis</b><br>Cellular morphology<br>Colony morphology <sup>2</sup><br><br>Motility (wet mount)<br>VITEK <sup>®</sup> MS (MALDI-TOF) | Gram-negative rods<br>Report results<br><br>Report results<br><i>E. coli</i>      | Gram-negative rods<br>Circular, convex, entire, smooth and cream (Figure 1)<br>Motile<br><i>E. coli</i> (99.9%) |
| <b>Genotypic Analysis</b><br>Sequencing of 16S ribosomal RNA gene (~ 1410 base pairs)  | ≥ 99% sequence identity with <i>E. coli</i> type strain (GenBank: JMST01000030.1) | 99.8% sequence identity with <i>E. coli</i> type strain (GenBank: JMST01000030.1)                               |
| <b>Purity (post-freeze)<sup>3</sup></b>  | Growth consistent with expected colony morphology                                 | Growth consistent with expected colony morphology   |
| <b>Viability (post-freeze)<sup>2</sup></b>   | Growth  | Growth  |

<sup>1</sup>NR-51342 was produced by inoculation of HMC-660 lot 59794623 into Tryptic Soy broth and grown 1 day at 37°C in an aerobic atmosphere. Broth inoculum was added to Tryptic Soy agar kolles which were grown 1 day at 37°C in an aerobic atmosphere to produce this lot.

<sup>2</sup>1 days at 37°C in an aerobic atmosphere on Tryptic Soy agar

<sup>3</sup>Purity of this lot was assessed for 7 days at 37°C in an aerobic atmosphere with 5% CO<sub>2</sub> on Tryptic Soy agar.

**Figure 1: Colony Morphology**



/Heather Couch/  
 Heather Couch

30 NOV 2018

Program Manager or designee, ATCC Federal Solutions

ATCC<sup>®</sup>, on behalf of BEI Resources, hereby represents and warrants that the material provided under this certificate has been subjected to the tests and procedures specified and that the results described, along with any other data provided in this certificate, are true and accurate to the best of ATCC<sup>®</sup>'s knowledge.

ATCC<sup>®</sup> is a trademark of the American Type Culture Collection.  
 You are authorized to use this product for research use only. It is not intended for human use.

