

Monoclonal Anti-Ferret Interferon Gamma, Clone 1H1H12 (produced *in vitro*)

Catalog No. NR-4493

Product Description: Antibody Class: IgG1

Monoclonal antibody prepared against full-length ferret recombinant interferon gamma (IFN- γ) was purified from hybridoma supernatant by protein G affinity chromatography.

Lot: 58274822

Manufacturing Date: 01SEP2008

TEST	SPECIFICATIONS	RESULTS
Antibody Class	Report results	IgG1
SDS-PAGE (Coomassie Blue densitometer scan)	Correct molecular weight (MW) for heavy and light chains	Correct MW for heavy and light chains (Figure 1A)
Western Blot Analysis Anti-mouse IgG (mix of light chain- and heavy chain-specific)	Reactive	Reactive (Figure 1B)
Concentration by Lowry Assay¹	Report results	0.1 mg/mL
Functional Activity Direct ELISA Recombinant ferret IFN- γ^2 Recombinant ferret tumor necrosis factor (TNF- α) Capture/detection ELISA ³ Endogeneous ferret IFN- γ^4 Recombinant ferret IFN- γ^2	Reactive Not reactive Reactive Reactive	Reactive (Figure 2) Not reactive (Figure 2) Reactive (Figure 3) Reactive; BEI Resources NR-4492 and BEI Resources NR-4493 recognize distinct epitopes (Figure 4)

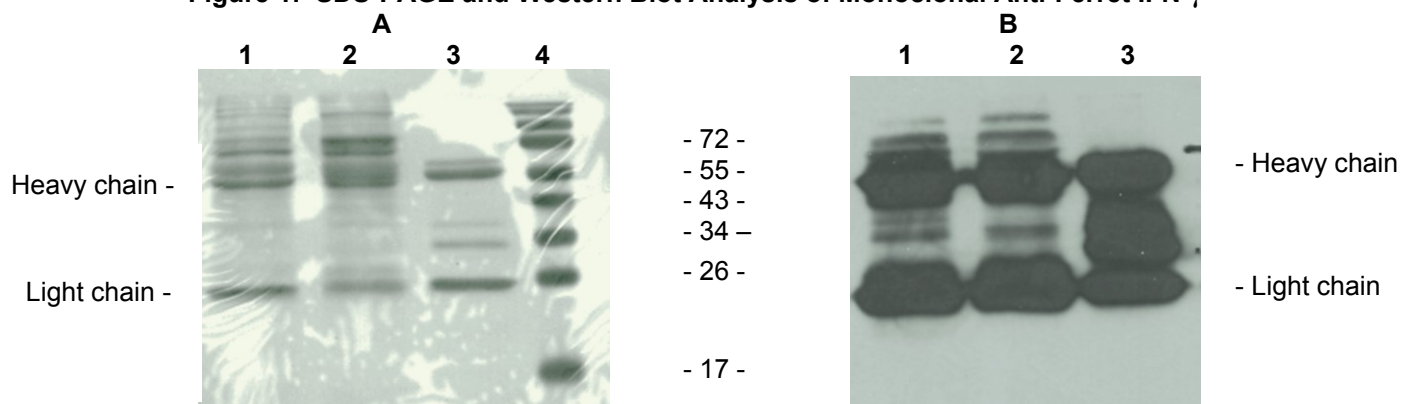
¹Bio-Rad DC Protein Assay using BSA as a standard

²BEI Resources NR-10349

³BEI Resources NR-4493 was used as a coating antibody. BEI Resources NR-4492 was biotin-labeled and used as a detection antibody.

⁴Secreted from ferret peripheral blood cells following stimulation with Concanavalin A (ConA)

Figure 1: SDS-PAGE and Western Blot Analysis of Monoclonal Anti-Ferret IFN- γ



Lane 1: BEI Resources NR-4492
 Lane 2: BEI Resources NR-4493
 Lane 3: Monoclonal IgG Control
 Lane 4: MW Markers (kDa)

Figure 2: Functional Activity of NR-4493 by Direct ELISA

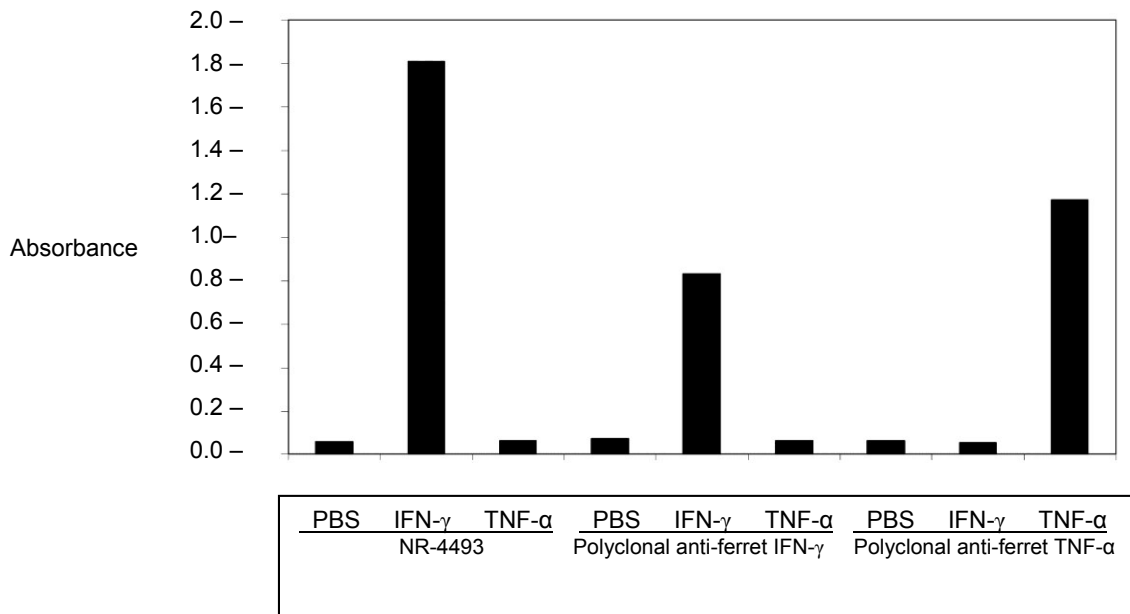


Figure 3: Secreted (Concanavalin A Stimulated) IFN- γ Recognition by NR-4493

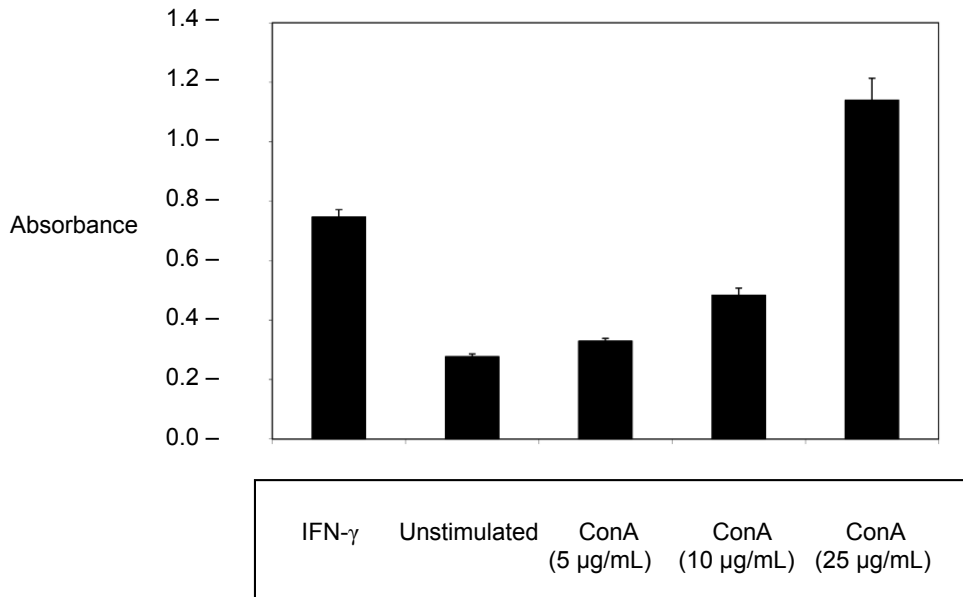
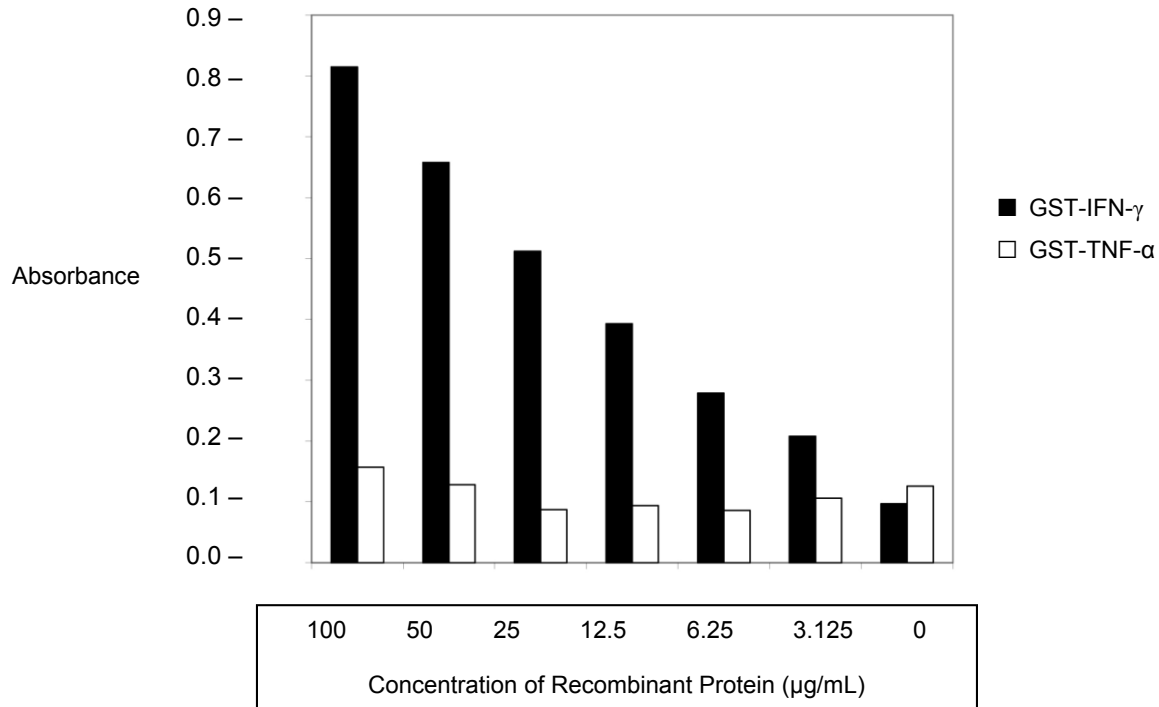


Figure 4: Recognition of Distinct Epitopes by Capture/Detection ELISA



Date: 13 NOV 2008

Signature: Signature on File

Title: Technical Manager, BEI Authentication or designee

ATCC®, on behalf of BEI Resources, hereby represents and warrants that the material provided under this certificate has been subjected by the contributor to the tests and procedures specified and that the results described, along with any other data provided in this certificate, are true and accurate to the best of ATCC®'s knowledge.

ATCC® is a trademark of the American Type Culture Collection.

You are authorized to use this product for research use only. It is not intended for human use.

