

Genomic DNA from *Mycobacterium canettii*, Strain NLA000701671

Catalog No. NR-49660

Product Description: Genomic DNA was extracted from a preparation of *Mycobacterium canettii* (*M. canettii*), strain NLA000701671.

Lot^{1,2}: 70007394

Manufacturing Date: 19MAY2017

TEST	SPECIFICATIONS	RESULTS
Genotypic Analysis Sequencing of 16S ribosomal RNA gene (~ 1420 base pairs)	≥ 99% sequence identity to <i>M. canettii</i> , strain CIPT 140070007 (GenBank: CA0001000151.1)	100% sequence identity to <i>M. canettii</i> , strain CIPT 140070007 (GenBank: CA0001000151.1) ³
Agarose Gel Electrophoresis	High molecular weight chromosomal DNA	High molecular weight chromosomal DNA (Figure 1)
Concentration by PicoGreen® Measurement	0.7 to 1.5 µg in 25 to 100 µL	1.0 µg in 28 µL per vial (35 µg/mL)
Amount per vial	0.7 to 1.5 µg	1.0 µg
Functional Activity by PCR Amplification 16S ribosomal RNA gene	~ 1500 base pair amplicon	~ 1500 base pair amplicon
OD₂₆₀/OD₂₈₀ Ratio	1.7 to 2.1	1.9
Bacterial Inactivation 10% of total yield plated on agar ^{4,5}	No viable bacteria detected	No viable bacteria detected

¹The bacterial preparation used for extraction of genomic DNA was produced by culture of BEI Resources NR-49260 lot 63954380. Genomic DNA was extracted using proprietary technology.

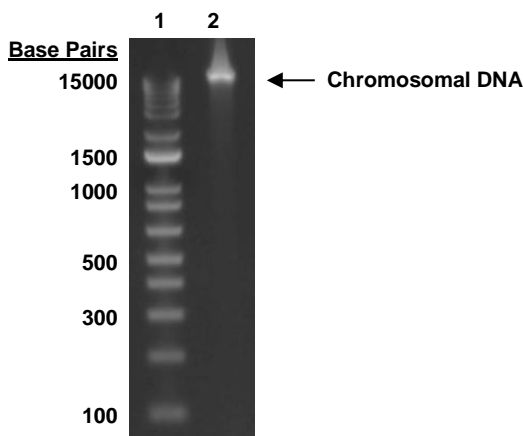
²NR-49660 lot 70007394 was vialled in TE buffer (10 mM Tris-HCl, 1 mM EDTA, pH ~ 8.0).

³Also consistent with other *M. africanum*, *M. bovis*, *M. caprae* and *M. tuberculosis*

⁴31 days at 37°C in an aerobic atmosphere with 5% CO₂ on Middlebrook 7H10 agar with OADC enrichment

⁵An extraction procedure was used that has been shown to consistently inactivate 100% of Gram-positive and Gram-negative bacteria.

Figure 1: Agarose Gel Electrophoresis



Lane 1: Invitrogen™ TrackIt 1 Kb Plus DNA Ladder™
Lane 2: 200 ng of NR-49660

/Heather Couch/

Heather Couch

06 DEC 2018

Program Manager or designee, ATCC Federal Solutions

ATCC®, on behalf of BEI Resources, hereby represents and warrants that the material provided under this certificate has been subjected to the tests and procedures specified and that the results described, along with any other data provided in this certificate, are true and accurate to the best of ATCC®'s knowledge.

ATCC® is a trademark of the American Type Culture Collection.

You are authorized to use this product for research use only. It is not intended for human use.

