

Genomic DNA from *Candida albicans*, Strain P57072

Catalog No. NR-50309

Product Description: Genomic DNA was extracted from a preparation of *Candida albicans* (*C. albicans*), strain P57072. *C. albicans*, strain P57072 is a bloodstream isolate from a person with a bloodstream infection collected in Iowa, USA in 2000.

Lot^{1,2}: 64158564

Manufacturing Date: 27FEB2017

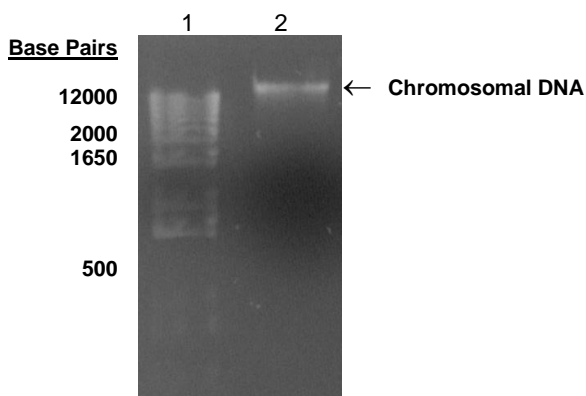
TEST	SPECIFICATIONS	RESULTS
Genotypic Analysis Partial 18S ribosomal RNA (rRNA) gene, internal transcribed spacer (ITS) 1, 5.8S rRNA gene, ITS 2, partial 28S rRNA (~ 530 base pairs) D1D2 region of the 28S rRNA gene (~ 590 base pairs)	≥ 99% sequence identity to <i>C. albicans</i> type strain (GenBank: HQ876043.1) ³ ≥ 99% sequence identity to <i>C. albicans</i> type strain (GenBank: HQ876051.1) ³	99.8% sequence identity to <i>C. albicans</i> type strain (GenBank: HQ876043.1) 99.7% sequence identity to <i>C. albicans</i> type strain (GenBank: HQ876051.1)
Agarose Gel Electrophoresis	High molecular weight chromosomal DNA	High molecular weight chromosomal DNA (Figure 1)
Concentration by PicoGreen® Measurement	≥ 5 µg per vial	10.5 µg in 144 µL per vial
Functional Activity by PCR Amplification Ribosomal RNA and ITS region	~ 1200 base pair amplicon	~ 1200 base pair amplicon
OD₂₆₀/OD₂₈₀ Ratio	1.7 to 2.1	1.8

¹The fungal preparation used for extraction of genomic DNA was produced from a culture of NRS-29435 lot 60842899. Genomic DNA was extracted using proprietary technology.

²NR-50309 lot 64158564, was vialled in Tris-HCl EDTA buffer (10 mM Tris-HCl, 1 mM EDTA, pH ~ 8.0).

³Genomic sequence of *C. albicans*, strain P57072 is available in GenBank, but does not contain the regions required for alignment.

Figure 1: Agarose Gel Electrophoresis



Lane 1: Invitrogen™ TrackIt 1 Kb Plus DNA Ladder™
 Lane 2: ~ 200 ng of NR-50309

/Heather Couch/

Heather Couch

14 DEC 2018

Program Manager or designee, ATCC Federal Solutions

ATCC®, on behalf of BEI Resources, hereby represents and warrants that the material provided under this certificate has been subjected to the tests and procedures specified and that the results described, along with any other data provided in this certificate, are true and accurate to the best of ATCC®'s knowledge.

ATCC® is a trademark of the American Type Culture Collection.

You are authorized to use this product for research use only. It is not intended for human use.

